



THE BRIDGE

Village Comes Full Circle with Downtown Revitalization

The Village's downtown area has undergone a significant transformation and revitalization - but it has not been without sacrifices. From the spring of 2018 until mid-August of this year, residents, business owners and visitors to Long Grove patiently endured ongoing roadwork with multiple lane closures and detours, flaggers, workers, and vehicles. The inevitable dust settled around Old McHenry Road, Robert Parker Coffin (RPC) Road, as well as the RPC Bridge, as it was closed several times, including during its reconstruction this last spring into summer. All this work and resulting improvements have now 27 months later been part of the Village's larger vision to update and modernize infrastructure where needed throughout the downtown. All of the improvements happened concurrently with the goal to maintain the old world charm and rural character that has endeared so many to Long Grove for generations.

The improvements to the downtown area kicked off with the Old McHenry Road reconstruction project in May of 2018, which was managed by the Lake County Division of Transportation. Intersection improvements were made near the center of town at RPC Road, which was ultimately changed from a four-way stop to a controlled traffic signal for the first time in the Village's history. Pavement reconstruction and resurfacing, drainage improvements, ADA accessible sidewalks, new curbs, a bike path, street lighting, streetscapes and landscaping all refreshed and reinvigorated the look and feel of this longtime main thoroughfare.

Continued on page 10

INSIDE THIS ISSUE:



<i>Village President's Letter</i>	2
<i>Remote Learning</i>	3
<i>EDC Update</i>	3
<i>RPC Bridge Reopens</i>	4
<i>Last Push for Census</i>	5
<i>Current, Proposed TIF</i>	6
<i>North End Businesses</i>	7
<i>Shop and Dine in Long Grove</i>	8
<i>New Facecover Guidelines</i>	9
<i>Buffalo Creek Park</i>	9
<i>Village Comes Full Circle (cont.)</i>	10
<i>Long Grove History</i>	11
<i>Reed-Turner Woodland</i>	12
<i>Bicycle and Pedestrian Trails</i>	13
<i>Village Seats on Ballot</i>	13

From the Village President



Bill Jacob
Bill.Jacob@LongGroveIL.gov

I hope that you enjoyed the summer. I know that there are many pastimes we can't partake in right now, such as attending a Cubs or Sox game, but we are fortunate to live in a beautiful community with much open space. It has been great just to get out to walk and run as we continue to take precautions during the pandemic. Personally, I have not been on an airplane since March 4th and that is probably the longest stretch of not flying since I graduated college. I never thought I would say that I miss getting on a packed 6 a.m. flight, but after almost six months of Zoom meetings, I have reached that point!

It has been great to see the foot traffic in our downtown patronizing our establishments and with our recent renovations, I believe it has created a retreat for many relative to what is going on in the world. Additionally, our covered bridge has been opened back up and it is something to see if you have not already. It was built using Robert Parker Coffin's design plans with some modifications, including a steel structure to protect the cover, and it is amazing how closely it resembles the original. I must admit however, that I am still in disbelief that it has been struck three times since August 14th when it reopened, which included a school bus that hit it, and got stuck underneath the cover less than 23 hours later. The good news is that the steel structure protected the cover and the boards that were damaged by all three incidents and can be easily be repaired. As a result, we will need to take some extra preventative measures to ensure the bridge is protected from similar incidents in the future.

With the delay from when funds are collected by the State and are deposited into our Village accounts, we are just starting to get a glimpse of the impact the pandemic has had on Village revenues. From a sales tax perspective, Long Grove is faring well with receipts that are actually up 23%, primarily driven by retailers that were deemed essential such as Menards and Sunset Foods. It is still too soon to tell how we will fare over the long term with some of the other distributed funds we receive from the State, as they will be impacted by a decrease in corporate and personal income tax due to the pandemic. However, the Village Board has taken a conservative posture on Village finances by approving a general fund budget with a 14% reduction from the previous year and has been carefully scrutinizing capital improvements to mitigate any potential financial issues. Road paving is what consumes the majority of our capital budget, but since we have repaved 56% of our roads over the past five years against our 15-year plan, we're in a relatively good position if we have to cut back on road paving.

Continued on page 9

Village Trustees



Chris Borawski
Chris.Borawski@LongGroveIL.gov

Anne Kritzmire

Anne.Kritzmire@LongGroveIL.gov



Chuck Nora

Chuck.Nora@LongGroveIL.gov

Rita O'Connor

Rita.Oconnor@LongGroveIL.gov



Bobbie O'Reilly

Bobbie.Oreilly@LongGroveIL.gov

Jennifer Michaud

Jennifer.Michaud@LongGroveIL.gov



Village Clerk



Amy Johns Gayton

Amy.Gayton@LongGroveIL.gov

School Year Resumes with Remote Learning

As many families with school-aged children anticipated would happen during the ongoing pandemic, preparations for going back to school were markedly different compared to last year. Across all the school districts that serve the Village of Long Grove, remote learning is now being used for instructing and communicating between teachers and students. Residents will see many nearly empty school parking lots in their communities, much like last spring when the state-wide building closures took effect during the Stay at Home order.

Each school district made the decision to continue using distance learning, based on the need to provide a safe and effective environment for students, instructors and staff. The computer-enabled teaching method was implemented in many regions starting in March of 2020, when schools had to come up with a way to resume learning when the pandemic hit. This fall, many schools are providing enhanced electronic learning, which includes live streaming of lessons and presentations on 'bell schedules' where entire classrooms can interact together at the same time.

Dates when Long Grove schools began fall semesters varied based on the school district. Districts 79 and 125 started the week of August 17; Districts 96 and 120 started the week of

August 24; and District 76 started the week of August 31. A listing of the school districts for Long Grove can be found by visiting the Village's website longgroveil.gov/planning-zoning/page/school-districts-village-long-grove.

Phillip Estates Subdivision

The Village Board referred the application for a planned unit development (PUD) called the Phillip Estates Subdivision to the Plan Commission & Zoning Board of Appeals at its July 28, 2020 Board Meeting. The proposed new subdivision would be built on 34 acres and include 19 single-family lots on currently vacant property at Cuba Road south of Glenstone and east of Deerwood Estates. The PUD site was previously known as Canterbury Park and has been undeveloped for many years. The Phillip Estates Subdivision proposal would require the property to be rezoned. A public hearing is tentatively set for Tuesday, October 6, 2020. More information is available at longgroveil.gov by searching 'Phillip Estates'.

Economic Development Commission Update

The Economic Development Commission (EDC) is a committee that serves the Village and advises the Village Board. It meets twice monthly at 7:00 a.m. on the second and fourth Tuesdays. Most recently, these meetings have taken place on Zoom due to the pandemic and ongoing safety guidelines.

The EDC has been working diligently to be a resource and provide support to Long Grove businesses, as well as assist with economic development efforts for the Village. Their work from April through June of this year included hosting webinars for Long Grove businesses that provided a meeting place, as well as education and resources. Speakers at these meetings provided businesses guidance to reopen their doors during the pandemic from a health and safety perspective, as well as business planning, and covered other business-related topics.

Members of the EDC also played vital roles in writing two grant applications under the Rebuild Illinois Program. The first was a \$1 million Fast Track Public Infrastructure Grant for the rehabilitation of East Cuba Road, and the second was a \$2.95 million Public Infrastructure Grant to fund Long Grove's connection in the downtown area to Lake Michigan.

There are approximately 100 businesses in Long Grove, and EDC members have reached out to many of them over the last few months. Questions they have asked of business owners have included how their business survived since the start of the pandemic, what assistance they needed, benefits of doing business in Long Grove and if there was an interest in quarterly meetings to provide additional resources to them.

Monthly meetings have also been established with Lake County Partners to provide and receive updates relating to business development opportunities in Long Grove.



RPC Bridge Reopens, Survives Separate Accidents Afterwards



The Robert Parker Coffin (RPC) Bridge was reopened at 1:30 p.m. on Friday, August 14, 2020 after a five-month renovation project. Since then, there have unfortunately been nearly a handful of instances (four as of this publish date) where vehicles that were over clearly posted height and weight limits have driven over the bridge. While there has so far been no significant structural damage caused by these incidents, the timber cover will need to be repaired - but the bridge remains open at this time for our residents, business community members and visitors to use and enjoy.

The first incident on the RPC Bridge occurred less than 24 hours after its recent reopening when a privately chartered school bus hit the bridge, then proceeded over it, made contact with the steel frame and then got stuck underneath. Air had to be let out of the tires so the bus could be towed away and both sides of the cover were damaged. Subsequent accidents involved three trucks that caused further damages, though still only to the cover.

More information on repairs and steps being taken to prevent further incidents will be provided in the near future. Please consider subscribing to the Long Grove Enews by visiting longgroveil.gov/ewssignup to receive the most up-to-date information from the Village of Long Grove.

A Long and Varied Path to Reopening

In the midst of the Old McHenry Road reconstruction project that began in the spring of 2018, and just weeks after

the bridge was added to the National Register of Historic Places, a box truck severely damaged it on June 27, 2018 requiring its immediate closure. It was reopened leading into the holiday season that year and through the winter of 2019, but without its timber cover which needed to be replaced due to the accident. Once the spring construction season began, it was closed once again for the start of Robert Parker Coffin (RPC) Road reconstruction project. The last leg of its journey was from March until August of this year, when it received its new cover, and several other improvements and repairs to bring it back to its former glory.

Village President Bill Jacob made comments at the RPC Bridge's recent reopening that local community members gathered to witness.

"It's taken a long while to get here; the Village has invested nearly \$600,000 in the bridge restoration project, and along with a state grant, insurance funds from the truck driver's insurance company and \$53,000 raised by the HDLGBA and historical society have made this entire project possible," said Village President Jacob. "We all worked together, and what started out as an extremely challenging situation has turned out to be a big positive for our community in the end."

The grant from the state totaled \$250,000, and the truck driver's insurance company paid just under \$200,000 toward the renovation costs.

Former HDLGBA President Ryan Messner was instrumental in helping the bridge achieve its historical status, and said it is much more than just a gateway into the Village. “The bridge symbolizes the enduring spirit of this community. When we get knocked down, we pull together and stand back up, stronger than ever,” he said. “I look forward to the rebuilt bridge welcoming visitors to a revitalized historic downtown Long Grove for generations to come.”

years in the making.

“To finally see the bridge restored and reopened brings pride and joy for me, and for everyone in the historical society. In addition to its historical significance, the bridge has great charm and sentimental value for our community and those the world over who have expressed their love for our efforts to see it restored,” Underwood said.

The Long Grove Historical Society also played a significant role in achieving the historical status of the bridge as well as supported fundraising efforts. President Angie Underwood expressed her satisfaction with the outcome that has been

Despite the recent incidents since the RPC Bridge’s reopening, it represents the final piece of a vast and complicated undertaking by the Village of Long Grove to update, improve and continue to beautify its beloved downtown area.

Bridge Remnants to Be Repurposed

The Historic Downtown Long Grove Business Association (HDLGBA), in partnership with the Long Grove Historical Society and the Village of Long Grove, is planning to repurpose many of the leftover materials from the bridge renovation to preserve its historical significance. Projects that are planned include:

- Incorporating original limestone blocks from the bridge’s old abutments into a new park site to be located adjacent to the bridge, along Buffalo Creek; the new park will offer walkways and benches within natural landscaping, gathering areas and scenic views of the bridge
- Using old wooden planks from the bridge to build a covered pedestrian bridge as a replica, to be situated along a pathway in the new park, crossing a dry creek bed
- Relocating three of the original limestone blocks to the Village Hall property to make a small monument with a plaque

This project is expected to begin over the next few weeks, weather-permitting.

Last Push for Census

A strong community response to the U.S. Census helps our community receive funding for schools, hospitals, roads and more, and impacts our political representation. Please be advised that census workers are currently going door-to-door visiting households in Long Grove that have not yet completed the census, while wearing personal protective equipment and following safety protocols.

Please Note: Many residents received two census surveys in the mail; one with their street address and the other with the RFD address. The Census Bureau has been made aware of this issue to avoid double-counting Long Grove households. **For residents who have not yet completed the census, the Village advises you complete the form online here: 2020census.gov using the street address, not the RFD address.** If you have already returned a form using the RFD address, you do not need to resubmit the form with the street address. Residents can fill out the survey at my2020census.gov or call **844-330-2020**. View a video here youtube.com/watch?v=bcE5wXH17Os&feature=youtu.be to learn more about the importance of being counted. Please remember all census responses are completely confidential. Do your part and help Long Grove receive its fair share of funding, resources and more for the next decade!



Downtown TIF Generating Revenues

At the September 8, 2020 Village Board meeting, updated projections for the Downtown Tax Increment Financing (TIF) district were presented and discussed. We are pleased to share that the TIF district is now generating substantially greater net revenues this year and will make payments to the Open Space Fund for the first time in eight years. The Open Space Fund had advanced monies to the TIF district in the past to help fund TIF district capital projects, such as Village water infrastructure for Sunset Grove, Harbor Chase and the downtown, improvements to the Archer parking lots to enable future restaurants there, as well as downtown street and sidewalk enhancements.

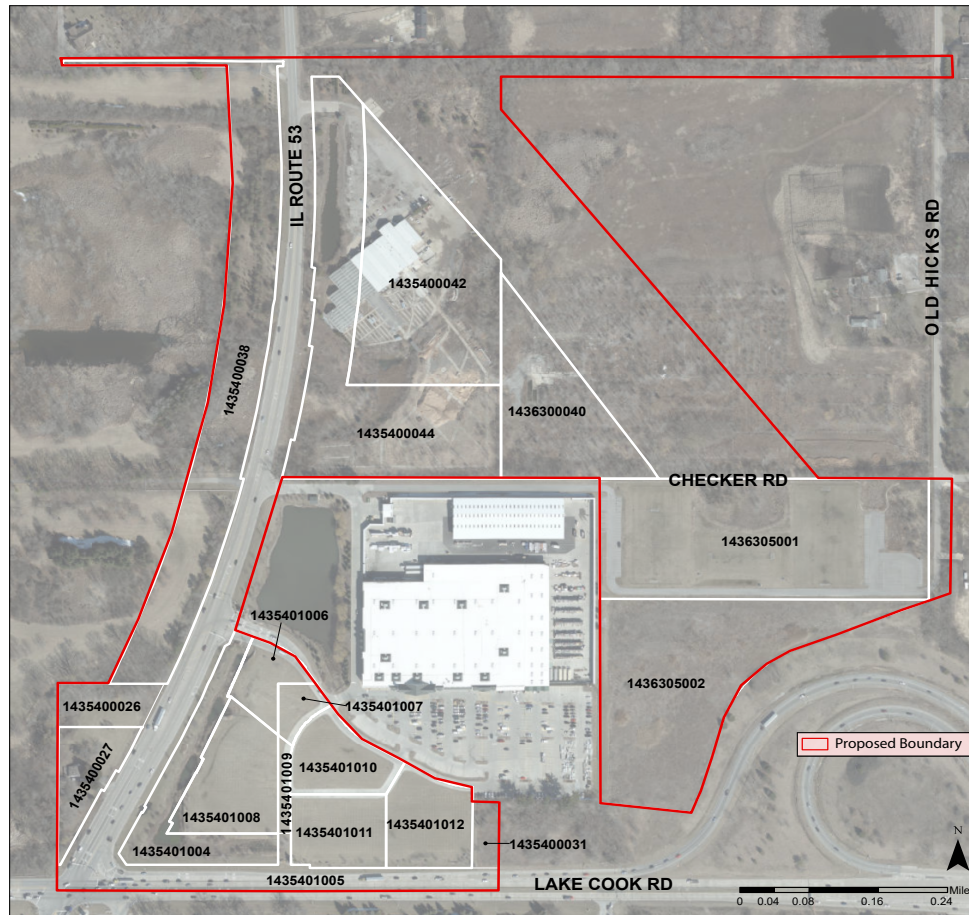
The increased net revenues are due to, 1) increased property values for the Sunset Grove business district, Harbor Chase, the Executive House and other properties, 2) refinancing in January of this year for bonds that the TIF district issued in 2010 which reduced the interest rate paid from 7.50% to 3.30%, 3) finishing rebate payments to Sunset Grocery, which had also paid for some improvements that helped increase property values, 4) strong sales tax receipts in the Sunset Grove business district, some of which are pledged to the TIF district, and 5) the conclusion of TIF district capital project expenses for the foreseeable future.

While the current projections take a conservative view and do not forecast additional improvements in the district that could boost property values, the Village Board, Staff, and the Economic Development Commission (EDC) continue to vigorously promote and pursue opportunities for more TIF district development within the Village Comprehensive Plan's vision. These include the farmland on Route 83 known as the South 15, the Archer lot pads, and additional opportunities in the downtown and 'triangle' area just south of downtown.

To learn how to participate in future meetings of the EDC, please visit longgroveil.gov/meetings and click on 'Agenda' for the EDC meetings.

Proposed South Gateway TIF District

In an effort to take thoughtful steps to ensure economic vitality, the Village of Long Grove is considering the creation of a TIF District at the South Gateway of Long Grove that includes roughly 60 acres near the intersection of Lake Cook Road and Route 53. A number of commercial developments have struggled to survive in this area. Eligibility criteria has been under review for the properties, which include developed and undeveloped parcels off of Route 53 on the east and west sides at the southern boundary near Lake Cook Road. Rights-of-way and other public property could also become part of the proposed TIF District. **A public hearing will take place regarding the proposed South Gateway TIF District on Tuesday, November 10, 2020.** Additional information about the meeting location and time will be provided in the Village Enews. Please sign up at longgroveil.gov/enews/signup. For additional information, please visit longgroveil.gov/sgateway-TIF.



North-End of Town Businesses

Did you know there are several businesses north of downtown Long Grove, where Routes 83 and 45 intersect, that are part of the Village's commercial district? The Long Grove Car Care Center at the southwest corner of the intersection features several shops that specialize in automotive services, including Autobahn Motor Works, Car-X Tire & Auto, Colonial Tire, Goodyear Auto Service, Midas Auto Service Experts, and The Cousins Car Detail Center. This one-stop service center is convenient for taking care of most any vehicle maintenance. Just south of the car care center on Route 83 are two additional Long Grove businesses, Cutler Workwear where you can shop for work boots, work gloves, safety gear and other apparel, as well as 83RV where you can buy, rent, or service recreational trailers, trucks and more.

Please consider supporting these businesses, and the entire business community to strengthen our local economy!



Autobahn Motor Works



Car-X Tire & Auto



Goodyear Auto Service



Colonial Tire Inc.



83 RV



The Cousins Car Detail Center



Cutler Workwear



Midas Auto Service Experts

Shop, Dine and Play Throughout Long Grove

With new terms like 'social distancing' now permanently etched into our vocabulary, the idea of shopping small can suddenly seem more attractive. Historic downtown Long Grove, with its old-world charms and new refurbishments, along with businesses all around the Village need your support as they transition into the fall season. Enjoy the new, extra-wide sidewalks, streetlamps, and restored covered bridge in the downtown area that welcome you to a variety of family-operated shops, services and restaurants – making Long Grove the ideal place for many of your day-to-day needs, or the place for an enjoyable day out with friends or family. In addition to our charming downtown, there are many businesses located throughout the Village. Please consider supporting Long Grove businesses whenever possible.

Although everyone has felt the constraints of COVID-19, the Long Grove business community has been united in staying strong. Your continued support will keep the momentum going as we head into the cold weather months. Take advantage of the one-of-a-kind businesses

that have unique gifts, excellent meals, treats for stocking your cupboards, wine, puzzles and so much more. Also, think of those businesses that provide for your everyday needs - such as grocery stores, home improvement, car care and other necessities. Shopping local helps our entire community! For a full listing of all Long Grove businesses, click here: longgroveil.gov/business-directory/page/long-grove-business-directory



Open Burning Ban Lifted

The Lake County Open Burning Ban that was in effect through August 15, 2020, has been lifted. All open burning in the Village of Long Grove needs to comply with the Village's regulations, which permits the burning of twigs, branches, and small trees. Burning of leaves, grass clippings or construction debris is **not** allowed. With a permit, prairie conservation areas can be burned in a controlled manner.

Other guidelines and restrictions for open burning include the following:

- Burning of construction materials, garbage and household or commercial waste are prohibited.
- Tree branches can be burned in piles measuring 3'x3'x3'. When permission is granted by the fire protection district, bundles measuring 5'x5'x5' can be burned. Fires over 5'x5'x5' are not allowed.

To perform an open burn related to prairie conservation, a burn permit is required from a fire protection district. To obtain an open burn permit, an [application](#) must be submitted to the Village, and the property will then be added to a list provided to the Illinois Environmental Protection Agency (IEPA). Once the Village receives confirmation from the IEPA, the approved list of properties is shared with the fire protection districts and posted on the Village website at longgroveil.gov and search 'Burn Permit', which point an open burn permit can be obtained from the

resident's fire protection district.

The Countryside Fire Protection District website at <http://www.countrysidefire.com/> and the Long Grove Fire Protection District website at <https://longgrovefpd.com/> list regulations for Long Grove, as well as for neighboring communities. For more information call the Countryside Fire Protection District 847-367-5511 or the Long Grove Fire Protection District 847-634-3143, ext. 2520.



From The Village President

Continued from page 2

Time is running out to complete the U.S. Census. If you have not completed the census, please do so by September 30th to ensure we get our fair share of state and federal funding, which is per capita based. Also, it's important to note that I have been assured by the U.S. Census Bureau that they will reconcile the duplication of addresses in their database caused by our legacy RFD postal address scheme, to ensure an accurate count for Long Grove when the survey closes.

Finally, please consider volunteering your time and talents and apply to serve the community on one of our commissions. Currently we have openings on the Conservancy Scenic Corridor Committee (CSCC) and the Economic Development Commission (EDC). You can find our volunteer application on the Village website at longgroveil.gov by searching 'Volunteer Profile'.

Stay well and I hope that you enjoy the fall.

Village President - *Bill Jacob*

New Face Cover Guidelines

New face cover guidelines are now in effect due to increasing COVID-19 cases throughout the state. The Illinois governor has ordered that face covers be worn over the nose and mouth by patrons at all Illinois restaurants, bars and any establishments that serve food, any time that they are interacting with a staff member. The new guidelines went into effect on Wednesday, August 26, 2020. Visit <https://dceocovid19resources.com/assets/Restore-Illinois/businessguidelines4/restaurantbars.pdf> for the full list of guidelines.



Buffalo Creek Park Improvements

Thanks to a \$12,000 grant from the MainStreet Organization of Realtors and North Shore-Barrington Association of Realtors, Buffalo Creek Park, the 5-acre gem of a green space in downtown Long Grove will be getting further enhancements. Bobbie O'Reilly, owner of Weichert Realtors/McKee Real Estate in downtown Long Grove and a Long Grove Village Trustee, successfully applied for this grant to benefit the park, which is owned and maintained by the Long Grove Park District.

be afforded in 2020 without this grant", said Kent Tinucci, President of the Long Grove Park District. "So, a big thanks to Bobbie and the supporting realty associations."

The Park District is now planning other enhancements to Buffalo Creek Park. A new entry arbor will be installed at the Robert Parker Coffin Road entrance, matching its charming counterpart at the entrance off of Old McHenry Road. Ecological maintenance will also be conducted, which entails cleaning up and removing non-native invaders in the sedge meadow, walnut grove and tree-lined borders of the park.

This scenic park has a rolling landscape and is only steps away from the restaurants and shops in downtown Long Grove - so be sure to get out and enjoy this beautiful community gem this fall!



Last year, the park district planted new gardens, restored existing paths and added new walking paths. This year, the gazebo, arbors and benches were power washed. Next will be repairs to these wooden structures and then a fresh coat of stain.

"Restoring and renewing all the park structures could not



Village Comes Full Circle

Continued from front page

As this project was getting underway, the RPC Bridge was hit by an oversized truck in June of 2018. The timber cover was damaged beyond repair and the bridge was immediately



closed for two months afterwards. It reopened - without its timber cover - leading up to the holidays aimed at encouraging area shoppers to support downtown businesses impacted for months due to the road construction through the summer and early fall. The bridge was closed again when the spring construction season began in 2019.



The Old McHenry Road project was finishing up in the spring of 2019, and the RPC Road reconstruction project, which was managed by the Village, was revving up and began in July. This project mirrored the challenges, sacrifices and ultimate improvements that occurred on Old McHenry Road. In addition to infrastructure improvements and aesthetic upgrades - both projects also included extension of the public watermain into the downtown and surrounding properties, with a goal to attract new businesses. The RPC Road project entered its final phases in the spring of this year, and culminated with a range of improvements to both main roadways running through the heart of the Village's downtown.



Significant repairs and restoration of the RPC Bridge were necessary due to the June 2018 accident. This project took nearly two years to begin, due to months of required planning and substantial costs which in the end totaled more than \$1million.



The RPC Bridge project began in March of this year, and the bridge remained closed for five months while it was also moved to an alternate location. During that time, steel piles, along with concrete footing and foundations were installed for additional support. Other additions included new abutments, a brand-new timber cover, siding and shingles. The bridge was also painted prior to being moved back to its original home this July, which was captured in drone footage that can be viewed at longgroveil.gov/rpc-bridge.

The official reopening of the bridge took place on Friday, August 14 but the celebrations were short-lived due to a number of incidents where vehicles that were too large to be traveling over it, damaged its newly installed timber cover. Fortunately, no structural damages have resulted due to the new engineering and additional supports that were part of its restoration. As of this newsletter publish date, repairs to the cover are planned and a committee has formed to provide recommendations to prevent further incidents from occurring.



Despite two years of road reconstruction and a number of challenges related to the Village's cherished RPC Bridge, visitors to Long Grove, along with its residents and businesses, can now take much pride in a renewed downtown that is most certainly poised for the future.

Not Your Grandmother's Historical Society

Full disclosure — I am a grandmother now. When I first joined the Long Grove Historical Society in 1999, the grandmas and grandpas at the time had already accomplished some impressive things. The Society first organized in 1974 to save the building that now serves as Village Hall, originally known as Drexler Tavern.



Former Drexler Tavern current Village Hall
Photo Credit: Long Grove Historical Society

The building was a donation to the Society in exchange for relocating the building to its current site. Long Grove residents supported an initiative by the Village Board to help provide the money needed to relocate and restore the building. Funding was raised through donations and grants, with the balance of the project's cost paid for with Village resources. By using the old tavern to house the Village's offices, the Village's portion of refurbishment costs could be justified.



An arrangement with Kildeer Countryside School provided land for the building's relocation to become the new Village Hall. Renovations included adding a meeting room wing and parking lot.
Photo Credit: Long Grove Historical Society

Over subsequent years, other Historical Society projects included relocating a mid-1800's farmhouse from Buffalo Grove to the Stempel Parking lot, which houses the historical society's archives, has a meeting room, and restored "period" rooms that are opened for tours on occasion. Ruth Barn and Archer School were also renovated and are where volunteers have dressed as traditional school marms that have led field trips for local third graders and raised money for the Society, partly by



The Farmhouse, originally from Buffalo Grove, being moved by truck to its current location in Stempel Parking Lot. Photo Credit: Betsy Coffin Hofmeister

raffling quilts and handcrafted wreaths. The school and the barn have formed the core of the program run by the Society, showing children first-hand what life was like in old-time Long Grove.



Robert Parker Coffin (pictured center in light gray suit) speaks to a crowd at the dedication for the covered bridge in 1973. Also pictured are Long Grove residents George and Carrie Umbdenstock and Norma Sayles. Photo Credit: Betsy Coffin Hofmeister

Today, members of the Historical Society are doing our best to carry through with these traditions. However, instead of acquiring and saving buildings, our efforts focus on preserving them. Our members have become advocates in Springfield, and locally in efforts to get our covered bridge restored and listed on the National Register of Historic Places. We host open houses, walking tours, and fun family events such as the Penny Carnival and Yuletide Sing. Funds are raised at local Trivia Nights and with skits, dancing and scary stories at our annual 'Ghost Walk' haunting of the downtown. This popular event is planned to return on Friday, October 23, 2020. To find out more, please visit our website at LongGroveHistory.org. No grandma/grandpa credentials necessary!

Written by Angie Underwood, President, Long Grove Historical Society

Protecting Reed Turner Woodland Ecosystems

Many of you have visited Reed-Turner Woodland Nature Preserve, right in Long Grove's backyard. It is an interesting place to hike with winding, hilly trails, pretty views of a lake, a meandering creek at the bottom of a deep ravine, loads of spring wildflowers and a variety of wildlife. What you might not know is what else makes this nature preserve especially valuable.



Highly invasive reed canary grass along the lake and in the sedge meadow at Reed-Turner Woodlands Nature Preserve Photo Credit: Janet Healy

Reed-Turner was given status as a Certified Illinois Nature Preserve decades ago. It is recognized as a high-quality natural area and habitat that has plants, animals and ecosystems that date back to when only Native Americans lived here. Certified Illinois Nature Preserves protect these last remnants of landscapes that survived in their historical and natural condition, even after Europeans settled and changed areas for urban and agricultural use.

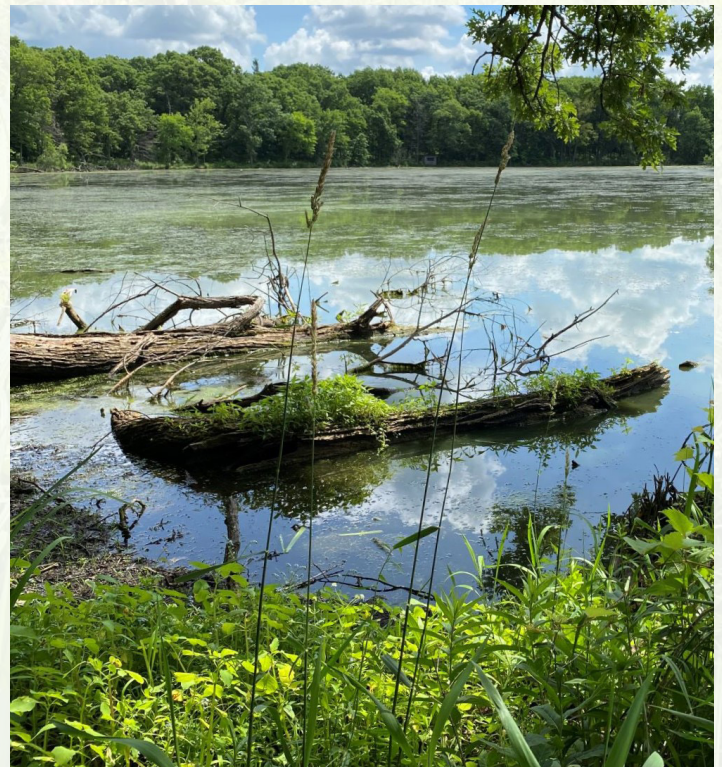
Reed-Turner contains five ecosystems in a small area, including woodland, savanna, prairie, wetland and a lake.

It is important that these ecosystems are protected, as some of them, such as prairies, oak savannas and wetlands, are diminishing in Illinois in the face of constant pressure from development, invasive species and climate change.

Each of the ecosystems at Reed-Turner has different flora and fauna, making for high diversity in a compact area. All these plants and wildlife, including rare and endangered species, are permanently protected by State law within the preserve.

To continue to protect Reed-Turner's ecosystems, the Long Grove Park District's highest priority is to control invasive plant species in the preserve. Invasive plants are non-native species that spread quickly and push out native plants that many wildlife species depend on for food and cover. Trained professionals and volunteers look for, and treat the key invasive species found in the preserve, such as reed canary grass, cattails, purple loosestrife, oriental bittersweet, phragmites, yellow iris and thistle. The Park District's mission is to protect Reed-Turner's high-quality natural habitat for people today, and generations to come.

The Long Grove Park District is a non-taxing public organization that is staffed by volunteers. Visit lgparks.org.



Reed-Turner Woodlands Nature Preserve in all its natural splendor – Photo credit: Janet Healy

Bicycle and Pedestrian Trails

Walking trails and bike paths offer healthy and environmentally friendly recreation for residents, but that's not all they offer.

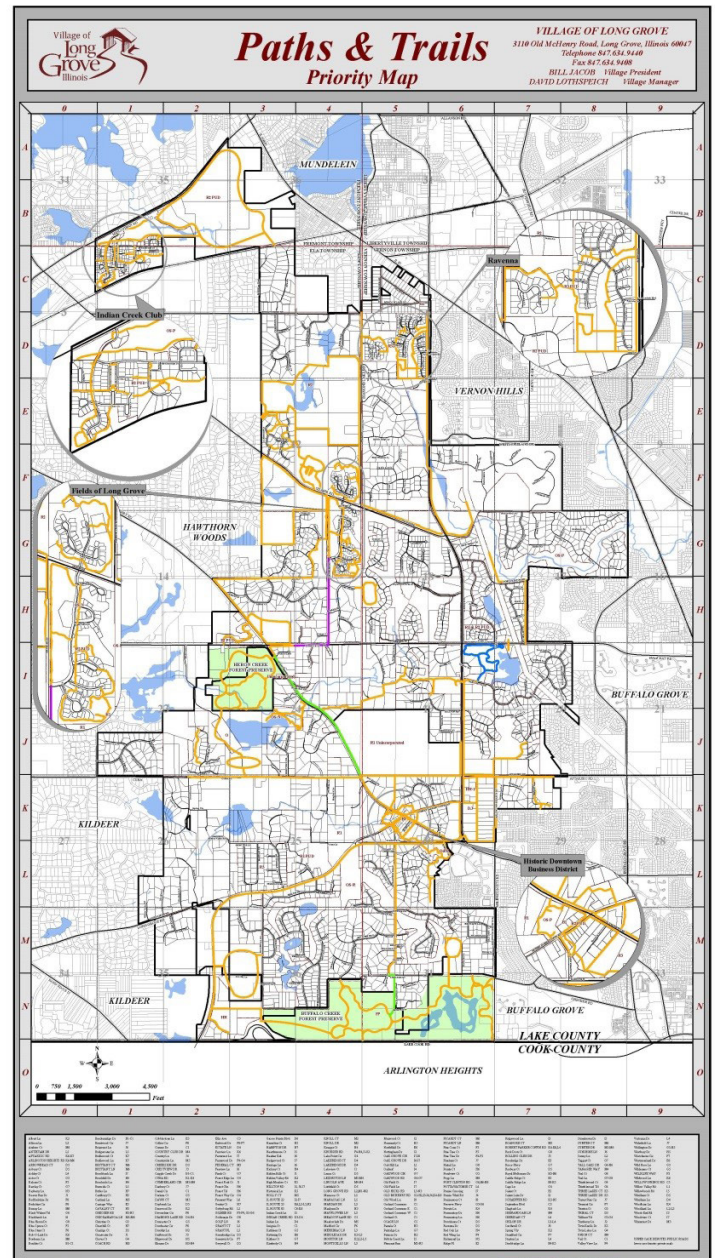
The Village of Long Grove's [Comprehensive Plan](#) was updated in 2018 and encourages the use of pathways as an alternative mode of transportation within the Village, and to surrounding communities. The Plan also highlights the benefits that pathways provide for neighborhood property values.

One of the Village's long-term goals continues to be the establishment of pathways in residential developments and within easements, which benefit pedestrians, hikers, cyclists, and equestrians. Motorized vehicles are not permitted on any of these trails. The trail system has been planned cooperatively with the Long Grove Park District and is designed to support overall traffic safety by removing non-motorized traffic from regular roadways.

Over the past few years, Lake County has completed more than 30 miles of new trails and is the second Illinois county to achieve more than 50% completion of the trail portion of the plan. Funding for trails comes from many sources, including the Illinois Transportation Enhancement Program (ITEP) and the Congestion Mitigation and Air Quality Improvement (CMAQ) Program.

The Village of Long Grove prioritizes the planning of its new bicycle and pedestrian trails, as illustrated on the Village's Paths and Trails Priority Map, which shows planned pathways by color codes. The Lake County 2040 Transportation Plan illustrates planned bikeways for the entire county, and can be found on the Lake County Department of Transportation's web page at lakecountyil.gov/191/Transportation.

While pathways are known to not only increase property values, a connected pathway system can also improve quality of life provided for residents. People choosing to ride or walk, rather than drive, are helping to improve their health, and doing their part to reduce carbon emissions throughout the community.



Click on the image of the map above to view an enlarged version or visit longgroveil.gov/pathwaysmap

Village Board Seats on April 2021 Ballot

A total of six Long Grove Village Board positions will be on the ballot in the Consolidated Election on April 6, 2021. The Village President, Village Clerk, and three Village Trustee seats will be open, and each are for four-year terms. An additional Trustee seat will be open that will fulfill a two-year term. Residents interested in running for these offices can begin to gather petition signatures on September 22, 2020. A candidate guide and can be found on the Lake County Clerk website at lakecountyil.gov/DocumentCenter/View/35987/2021-Candidates-Guide?bidId. For more information, call Village Hall at 847-634-9440 or email Sherry Shlagman at sshlagman@longgroveil.gov.



Upcoming Meetings

Board Of Trustees

September 22, 2020
October 13, 2020
October 27, 2020

Economic Development Commission

September 22, 2020
October 13, 2020
October 27, 2020

Plan Commission And Zoning

Board Of Appeals

September 15, 2020
October 6, 2020
October 20, 2020

Conservancy/Scenic Corridor Committee (CSCC)

October 7, 2020

Architectural Commission (AC)

September 21, 2020
October 19, 2020

Due to the pandemic, in-person meetings have been suspended until further notice. Some meetings are being held virtually.

Please visit LongGroveIL.gov/meetings for the most up-to-date meeting information and to learn how to participate virtually.

The above meeting schedule is current as of the publish date of this newsletter.

Vote in the November Election!

Voters have the option of voting by mail, postage free ballot drop box, in-person early voting, or voting in-person for the Tuesday, November 3, 2020 General Election. Applications are now available at the [Lake County Clerk website](#) to request a mail-in ballot; ballots will be mailed on September 24 and must be postmarked by November 3 to be counted. Early voting is available at all Lake County polling places from October 19 through November 2. The polls will be open on Election Day from 6 a.m. until 7 p.m. You can learn more about voting options, places to vote, how to register, and review other election information here at lakecountyil.gov/332/Voter-Services. Information on postage free ballot drop boxes and their locations in Lake County can be found at content.govdelivery.com/accounts/ILLAKE/bulletins/29c9600.



Village Contacts

Village Office

3110 Old McHenry Road
Long Grove, IL 60047
847-634-9440
Fax: 847-634-9408

Website

LongGroveIL.gov

Office Hours

Monday through Friday
8:00 a.m. to 5:00 p.m.

Village Staff Main

847-634-9440

Village Manager

David Lothspeich
DLothspeich@LongGroveIL.gov

Village Planner

Jim Hogue
JHogue@LongGroveIL.gov

Building Commissioner

Margerita Romanello
MRomanello@LongGroveIL.gov

Administrative Assistant

Sherry Shlagman
SShlagman@LongGroveIL.gov

Receptionist

Julie Bauer
JBauer@LongGroveIL.gov