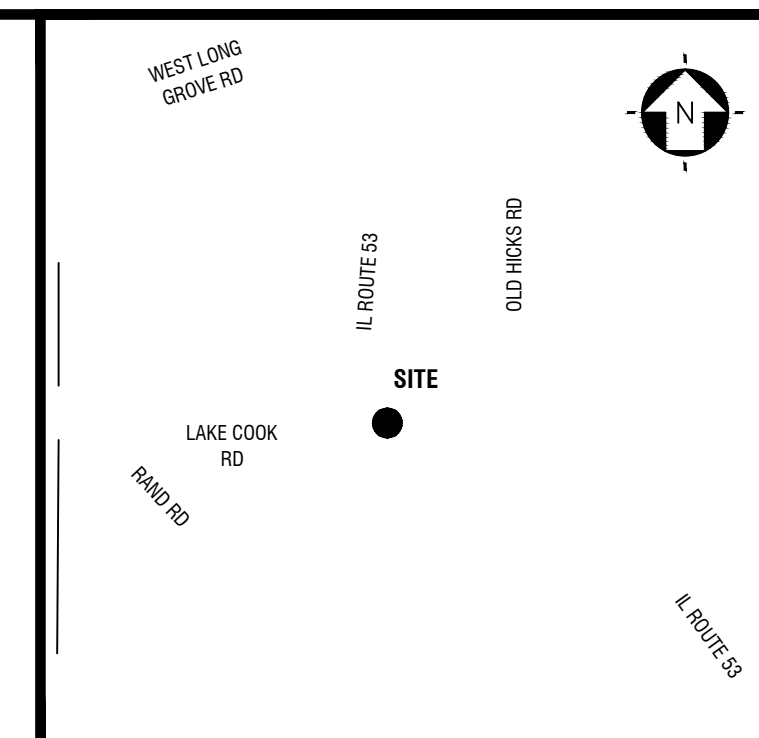




Kevin Reff, RLA  
 KITA Sustainable Designs, LLC  
 2101 Masters Drive  
 Springfield, TN 37172  
 (615) 469 - 1222 Ofc.  
 (615) 594 - 7333 Cell.  
 kreff@kitadesign.biz

PLANT SCHEDULE					
QTY.	COMMON NAME	BOTANICAL NAME	HEIGHT	TRUNK	COMMENTS
<b>CANOPY TREES</b>					
3	'Green Vase' Japanese Zelkova	Zelkova serrata 'Green Vase'	12' - 14'	3" Cal.	B&B
3	Red Maple	Acer rubrum	12' - 14'	3" Cal.	B&B
3	Red Maple	Acer rubrum	10' - 12'	2" Cal.	B&B
4	Willow Oak	Quercus phellos	12' - 14'	3" Cal.	B&B
13	TOTAL - CANOPY TREES				
<b>UNDERSTORY/COLUMNAR TREES</b>					
6	'Emerald Green' Arborvitae	Thuja occidentalis 'Smaragd'	6' - 7'		Well formed
2	Eastern Redbud	Cercis canadensis	8' - 10'	2" Cal.	B&B
8	TOTAL - UNDERSTORY TREES				
21	TOTAL - ALL TREES				
<b>SHRUBS</b>					
45	'Armstrong' Juniper	Juniperus chinensis 'Armstrongii'	36" Min.		Container
35	'China Girl' Holly	Ilex x meserveae 'Mesog'	24" Min.	5 Gal.	Container
6	'Green Velvet' Boxwood	Buxus 'Green Velvet'	24" Min.	5 Gal.	Container
86	TOTAL - SHRUBS				
<b>GRASSES, PERENNIALS AND GROUND COVER</b>					
10	Karl Foerster Grass	Calamagrostis x acutiflora 'Karl Foerster'		1 Gal.	
<b>TURF</b>					
-	Hybrid Fescue Seed/Sod	Drought tolerant fescue blend			



PLANS PREPARED FOR:  
 COMPTON ADDY  
 3805 EDWARDS ROAD  
 SUITE 500  
 CINCINNATI, OH 45209  
 (613) 757-1409

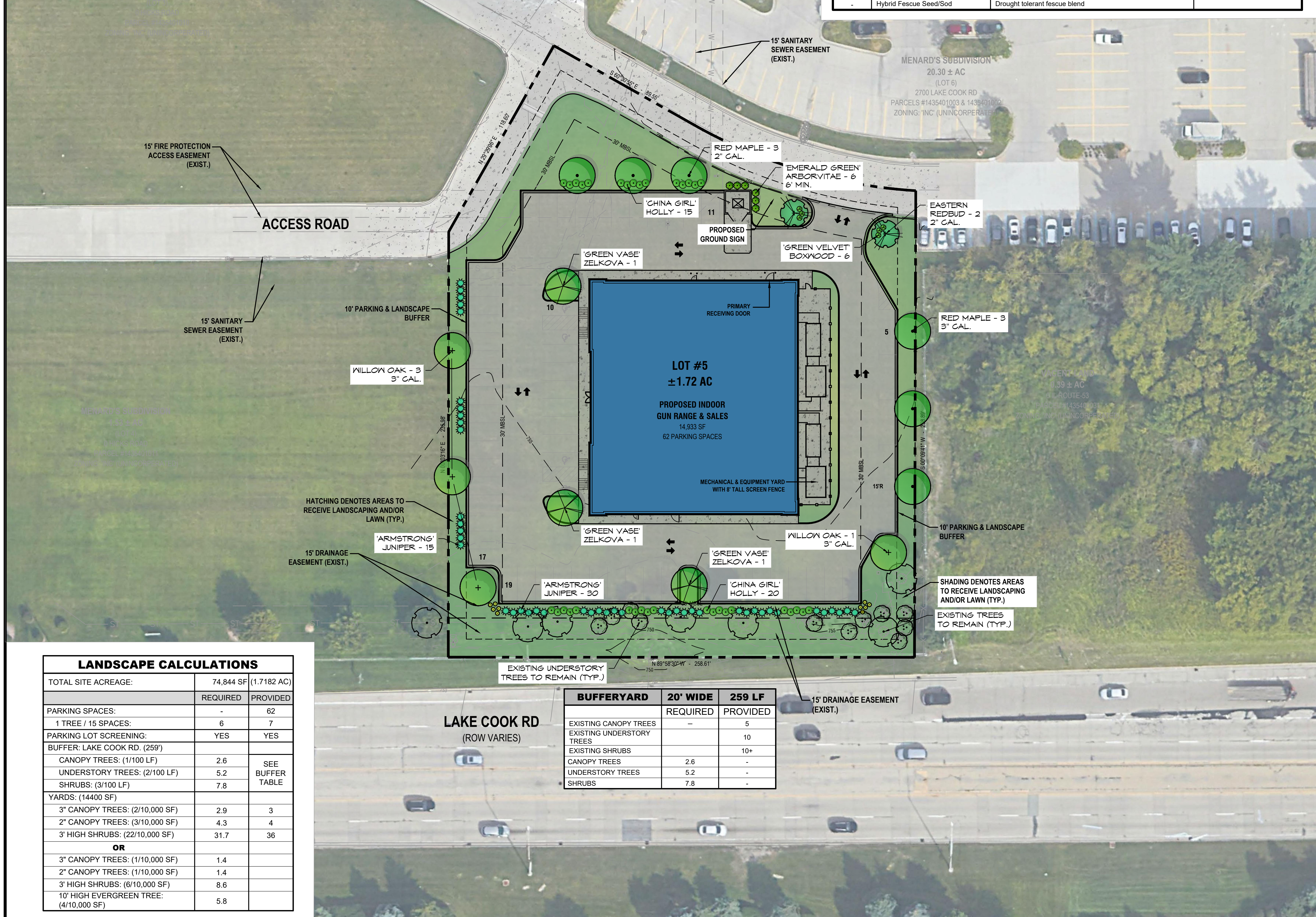
PLANS PREPARED BY:  
 4209 GALLATIN PIKE  
 NASHVILLE, TN 37216  
 TELE: (615) 227-5663  
 www.dmpgroup.com

**PROPOSED RANGE USA  
 GUN RANGE AND SALES**  
 LAKE COOK ROAD & OLD STATE ROUTE 53  
 LONG GROVE, LAKE COUNTY, IL

- LANDSCAPE NOTES:**
- WHEN APPLICABLE, IT IS THE CONTRACTOR'S RESPONSIBILITY TO PROTECT EXISTING TREES TO REMAIN. NO HEAVY EQUIPMENT SHOULD BE PERMITTED TO OPERATE OR BE STORED, NOR ANY MATERIALS TO BE HANDLED OR STORED, WITHIN THE DRILINES OF TREES OUTSIDE THE LIMIT OF GRADING.
  - THE QUANTITIES INDICATED ON THE PLANT LIST AND PLAN ARE PROVIDED FOR THE BENEFIT OF THE CONTRACTOR. THE CONTRACTOR SHALL BE RESPONSIBLE FOR HIS OWN QUANTITY CALCULATIONS AND THE LIABILITY WHICH PERTAINS TO THOSE QUANTITIES AND TO ANY RELATED CONTRACT DOCUMENTS AND/OR PRICE QUOTATIONS. QUESTIONS SHOULD BE DIRECTED TO THE LANDSCAPE ARCHITECT.
  - ALL PLANT MATERIALS SHALL BE NURSERY GROWN, GRADE "A" QUALITY, UNLESS OTHERWISE NOTED AND SHALL COMPLY WITH THE AMERICAN STANDARD FOR NURSERY STOCK: ANSI Z-60.1; LATEST EDITION, FOR SIZE AND QUALITY.
  - NO SUBSTITUTIONS AS TO TYPE, SIZE, OR SPACING OF PLANT MATERIALS SPECIFIED ON THIS PLAN MAY BE MADE WITHOUT THE APPROVAL OF THE LANDSCAPE ARCHITECT. KITA LANDSCAPE DESIGN (615) 469-1222.
  - THE CONTRACTOR IS TO VERIFY THE EXACT LOCATION OF ALL EXISTING UTILITIES AND TO PROTECT UTILITIES THAT ARE TO REMAIN. THE CONTRACTOR SHALL REPAIR ANY DAMAGE ACCORDING TO LOCAL STANDARDS AT THE CONTRACTOR'S EXPENSE. COORDINATE ALL CONSTRUCTION WITH THE APPROPRIATE UTILITY COMPANY.
  - SOD 5' BEHIND CURBS AND ISLANDS ADJACENT TO BUILDING. USE EROSION CONTROL ON SLOPES 3:1 AND GREATER. SEED AND STRAW ALL OTHER DISTURBED AREAS.
  - SOIL USED FOR PLANTING SHALL CONSIST OF (5) PARTS TOPSOIL, (1) PART SAND AND (2) PARTS ORGANIC MATTER, MIXED WITH 1 POUND OF FERTILIZER PER CUBIC YARD.  
 A. SAND SHALL BE CLEAN MASONRY SAND.  
 B. ORGANIC MATTER SHALL BE PEAT MOSS, OR WELL COMPOSTED PINE BARK, OR APPROVED EQUAL AND SHALL BE FINELY GROUND AND FREE OF WEEDS.  
 C. ALL FERTILIZER SHALL BE 10-10-10 WITH MINOR ELEMENTS. FERTILIZER SHALL HAVE 40-50% OF ITS TOTAL NITROGEN IN A WATER INSOLUBLE FORM.
  - PRE-EMERGENT HERBICIDE SHALL BE APPLIED TO ALL PLANT BEDS AND SOD AREAS PRIOR TO INSTALLATION. TREFLAN OR AN APPROVED EQUAL SHALL BE USED.
  - ALL PLANT BEDS SHALL HAVE A MINIMUM OF 3" DEEP MULCH. MULCH SHALL BE SHREDDED HARDWOOD.
  - IT IS THE LANDSCAPE CONTRACTOR'S RESPONSIBILITY TO CONFIRM MATERIAL QUANTITIES. IN THE EVENT OF A DISCREPANCY, THE QUANTITIES SHOWN ON THE PLAN SHALL TAKE PRECEDENCE OVER QUANTITIES SHOWN ON THE PLANT LIST.
  - PRIOR TO FINAL PAYMENT, THE LANDSCAPE CONTRACTOR SHALL PROVIDE THE OWNER WITH COMPLETE WRITTEN INSTRUCTIONS ON PROPER CARE OF ALL SPECIFIED PLANT MATERIALS.
  - THE LANDSCAPE INSTALLATION SHALL BE COORDINATED WITH THE IRRIGATION INSTALLATION WHEN APPLICABLE.
  - THE LANDSCAPE CONTRACTOR SHALL MAINTAIN POSITIVE DRAINAGE AWAY FROM STRUCTURES AND TAKE SPECIAL CARE TO INSURE THAT BED PREPARATION DOES NOT INHIBIT DRAINAGE.
  - ALL LAWN AREAS SHALL BE CULTIVATED TO A DEPTH OF 4" PRIOR TO SODDING AND SEEDING. PREPARED TURF BEDS SHALL BE FREE FROM STONES OVER 2" DIAMETER, WEEDS AND OTHER DELETERIOUS MATERIAL.
  - THE LANDSCAPE CONTRACTOR SHALL RAKE SMOOTH ALL SEED OR SOD AREAS PRIOR TO INSTALLATION.
  - THE CONTRACTOR SHALL BE RESPONSIBLE FOR BACKFILLING BEHIND THE CURB SO GRADE IS LEVEL WITH TOP OF CURB.
  - SODDED AREAS SHALL HAVE NO BARE AREAS. SEEDING AREAS SHALL BE CONSIDERED ACCEPTABLE WHEN FULL COVERAGE OF THE PERMANENT TURF GRASS SPECIES IS ESTABLISHED.
  - CUT AWAY ROPES OR WIRES FROM B&B PLANTS. PULL BACK BURLAP FROM TOP OF ROOT BALL. DO NOT ALLOW BURLAP TO BE EXPOSED AT SURFACE. TOTALLY REMOVE BURLAP IF IT IS SYNTHETIC.
  - IF CONTAINER GROWN PLANTS SHOW SIGNS OF BEING ROOT BOUND, SCORE ROOTS VERTICALLY.
  - ALL PLANT MATERIAL SHALL BE GUARANTEED FOR ONE YEAR FROM DATE OF FINAL ACCEPTANCE.
  - ALL REPLACEMENTS SHALL BE OF THE SAME TYPE, SIZE, AND QUALITY AS SPECIFIED ON THE PLANT LIST, UNLESS APPROVED OTHERWISE IN WRITING BY THE LANDSCAPE ARCHITECT.
  - ANY MATERIAL THAT IS DEEMED TO BE 25% DEAD OR MORE SHALL BE CONSIDERED DEAD, AND MUST BE REPLACED AT NO CHARGE. A TREE IS CONSIDERED DEAD WHEN THE MAIN LEADER HAS DIED BACK, OR MORE THAN 25% OF THE CROWN IS DEAD.
  - REPLACEMENTS SHALL BE MADE DURING THE NEXT PLANTING SEASON UNLESS THE LANDSCAPE CONTRACTOR AGREES TO AN EARLIER DATE.  
 PLANTING DATES:  
 SPRING: MARCH 15 - APRIL 15  
 FALL: OCTOBER 1 - NOVEMBER 30
  - THE LANDSCAPE CONTRACTOR WILL NOT BE RESPONSIBLE FOR PLANT MATERIAL THAT HAS BEEN DAMAGED BY VANDALISM, FIRE, RELOCATION, WILDLIFE, THEFT, OR OTHER ACTIVITIES BEYOND THE LANDSCAPE CONTRACTOR'S CONTROL.
  - CONTRACTOR TO IRRIGATE ALL NEW LANDSCAPE PLANTINGS AND LAWN AREAS WITH AN AUTOMATED UNDERGROUND IRRIGATION SYSTEM, ENSURING HEAD-TO-HEAD COVERAGE. IRRIGATION SYSTEM TO BE DESIGN-BUILD.
  - GENERAL CONTRACTOR TO COORDINATE AND BE RESPONSIBLE FOR WATERING ALL PLANTS AND SEEDING AREAS AFTER PLANTING UNTIL IRRIGATION SYSTEM IS OPERABLE.

NO.	DATE	DESCRIPTION

DATE: 04/08/22  
 DMG Project No: 20174  
 CONCEPTUAL SITE PLAN  
**L1.0**



LANDSCAPE CALCULATIONS		
TOTAL SITE ACREAGE:	74,844 SF (1.7182 AC)	
	REQUIRED	PROVIDED
PARKING SPACES:	-	62
1 TREE / 15 SPACES:	6	7
PARKING LOT SCREENING:	YES	YES
BUFFER: LAKE COOK RD. (259')		
CANOPY TREES: (1/100 LF)	2.6	SEE BUFFER TABLE
UNDERSTORY TREES: (2/100 LF)	5.2	
SHRUBS: (3/100 LF)	7.8	
<b>YARDS: (14400 SF)</b>		
3" CANOPY TREES: (2/10,000 SF)	2.9	3
2" CANOPY TREES: (3/10,000 SF)	4.3	4
3" HIGH SHRUBS: (22/10,000 SF)	31.7	36
<b>OR</b>		
3" CANOPY TREES: (1/10,000 SF)	1.4	
2" CANOPY TREES: (1/10,000 SF)	1.4	
3" HIGH SHRUBS: (6/10,000 SF)	8.6	
10" HIGH EVERGREEN TREE: (4/10,000 SF)	5.8	

	BUFFERYARD 20' WIDE 259 LF	
	REQUIRED	PROVIDED
EXISTING CANOPY TREES	-	5
EXISTING UNDERSTORY TREES	-	10
EXISTING SHRUBS	-	10+
CANOPY TREES	2.6	-
UNDERSTORY TREES	5.2	-
SHRUBS	7.8	-