


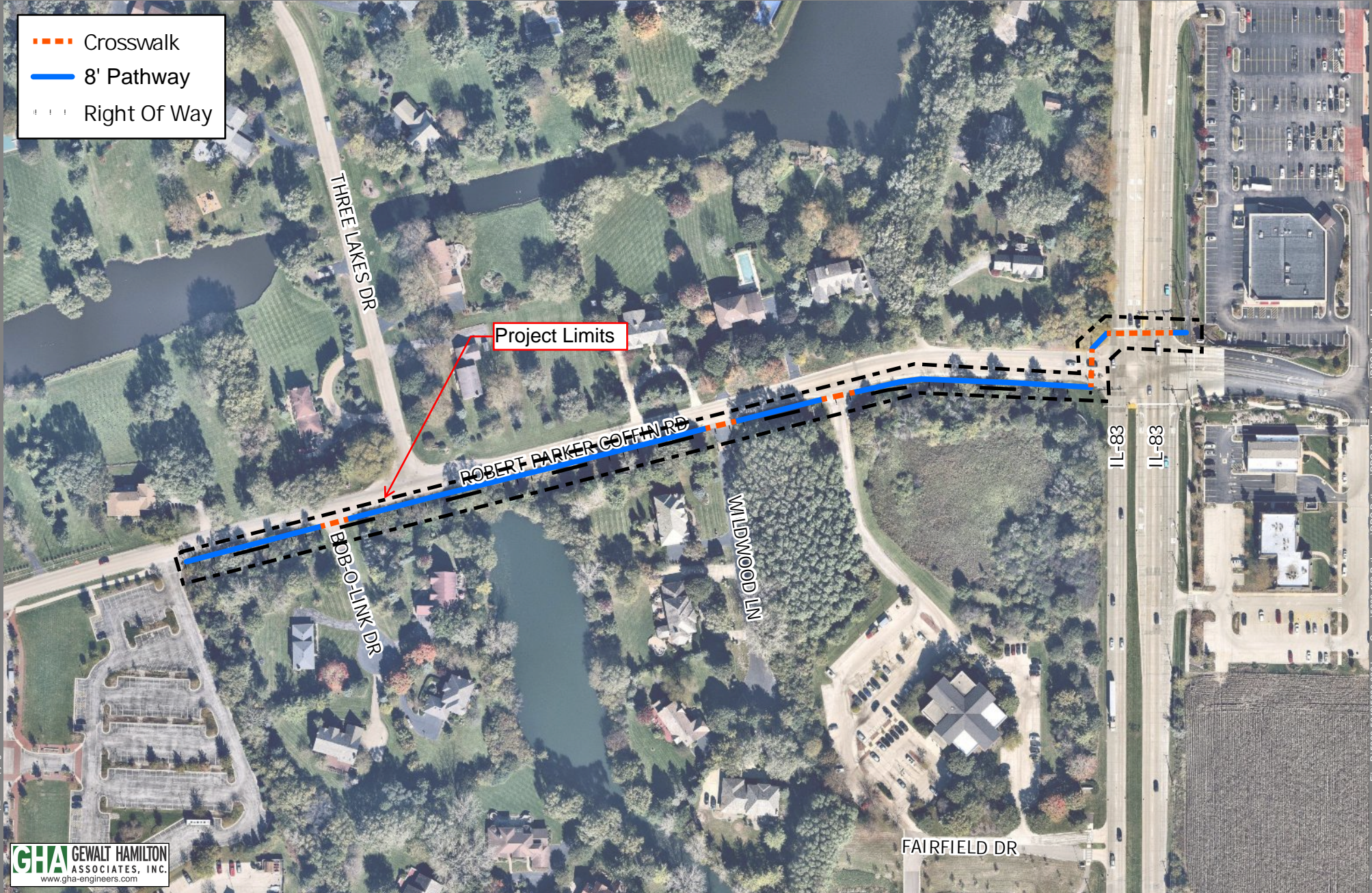


-  Crosswalk
-  8' Pathway
-  Right Of Way



Sources: nearmap.us; Copyright: nearmap 2015

GHA GEWALT HAMILTON
ASSOCIATES, INC.
www.gha-engineers.com

File: P:\5000-5049\5000.000 Long Grove\5000_102 Pathways\RPC Pathway Mapping\RPC Pathway Mapping.aprx
Drawn By: gnewton

Project Site Development Plan

Robert Parker Coffin Road Pathway
Village of Long Grove, Illinois

