

Item #6B:
Village President Jacob
Corona Virus (COVID-19) - *Update*

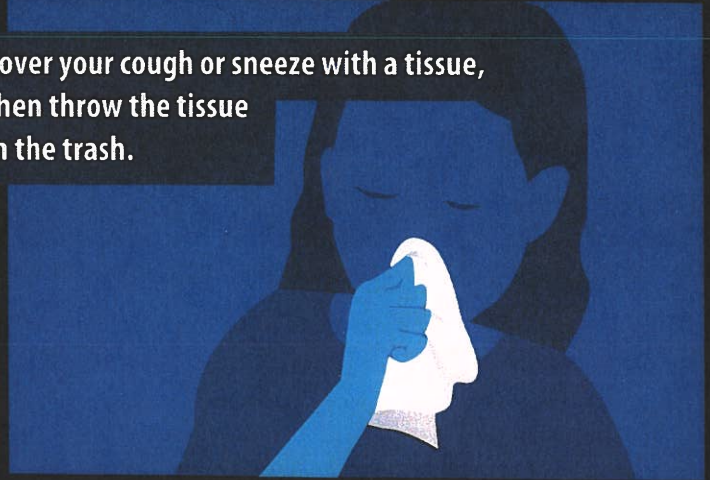
STOP THE SPREAD OF GERMS

Help prevent the spread of respiratory diseases like COVID-19.

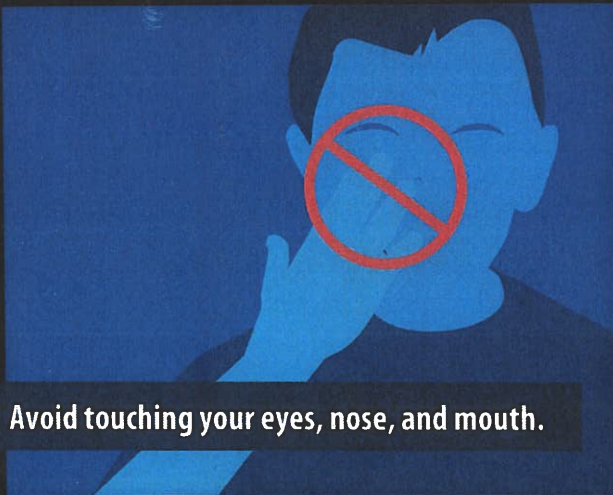
Avoid close contact with people who are sick.



Cover your cough or sneeze with a tissue, then throw the tissue in the trash.



Avoid touching your eyes, nose, and mouth.



Clean and disinfect frequently touched objects and surfaces.



Stay home when you are sick, except to get medical care.



Wash your hands often with soap and water for at least 20 seconds.



For more information: www.cdc.gov/COVID19



LakeCounty

Health Department and
Community Health Center

Coronavirus (COVID-19) Update

March 4, 2020

Tim Sashko
*Lake County
Board of Health President*

Dr. Sana Ahmed, MD
Medical Epidemiologist

Patti Corn
*Emergency Response
Coordinator*

Brian Louie
*Senior Marketing and
Communications Specialist*



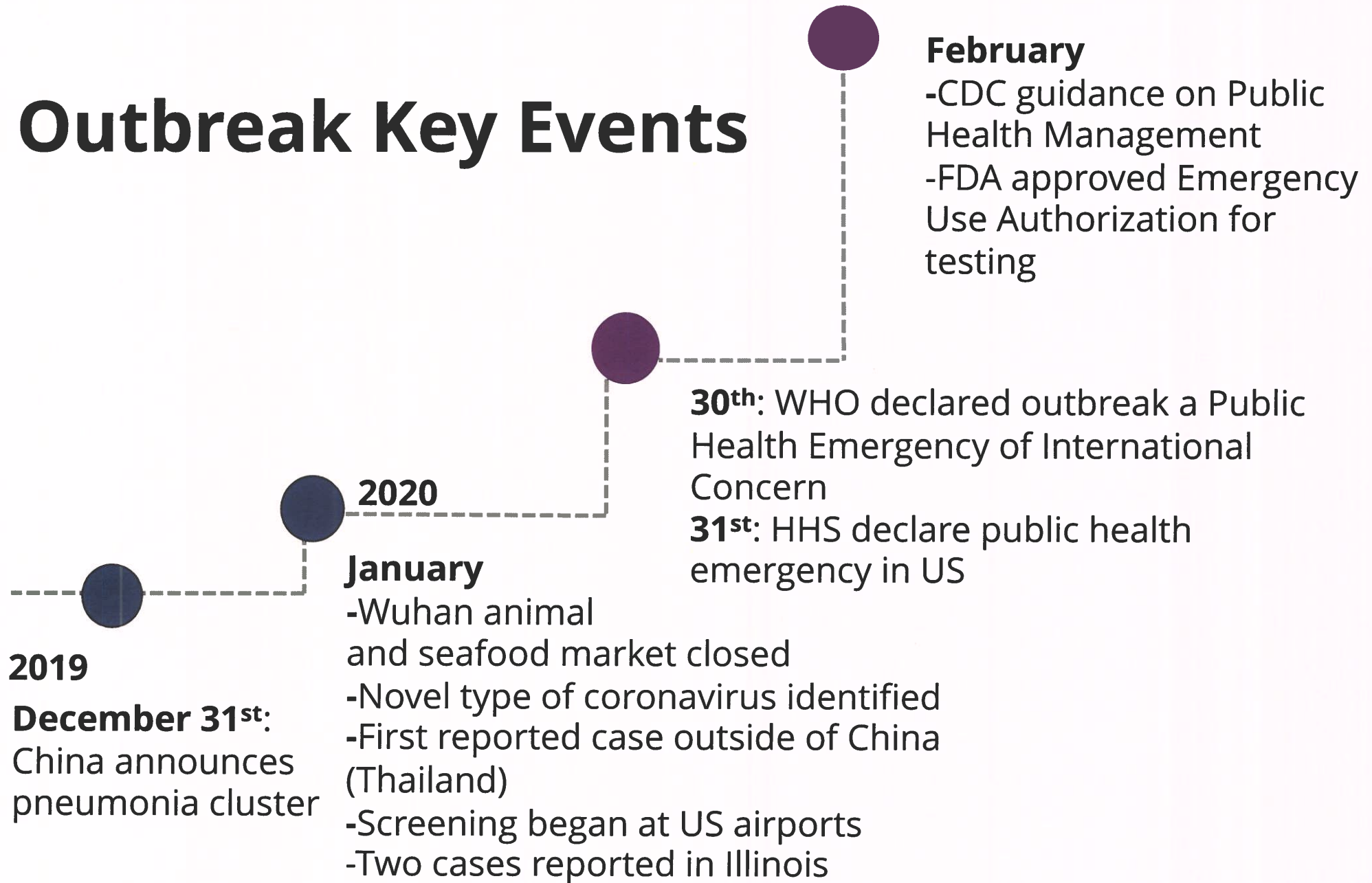
Situational Update *and* Local Public Health Preparedness

Dr. Sana Ahmed, MD
Medical Epidemiologist

Objectives

- Timeline of Events
- Background of Coronavirus
- United States and Illinois Response
- Local Public Health Response
- Local Public Health Preparedness

Outbreak Key Events



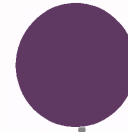
Outbreak Key Events



2020

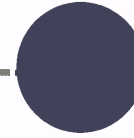
February

- IL first state to provide diagnostic testing
- US citizens repatriated from China and evacuated from cruise ships
- Travel notices issued for Iran, Italy, South Korea
- Advised by CDC to prepare for community spread of virus
- 1st case reported due to possible community-spread in California



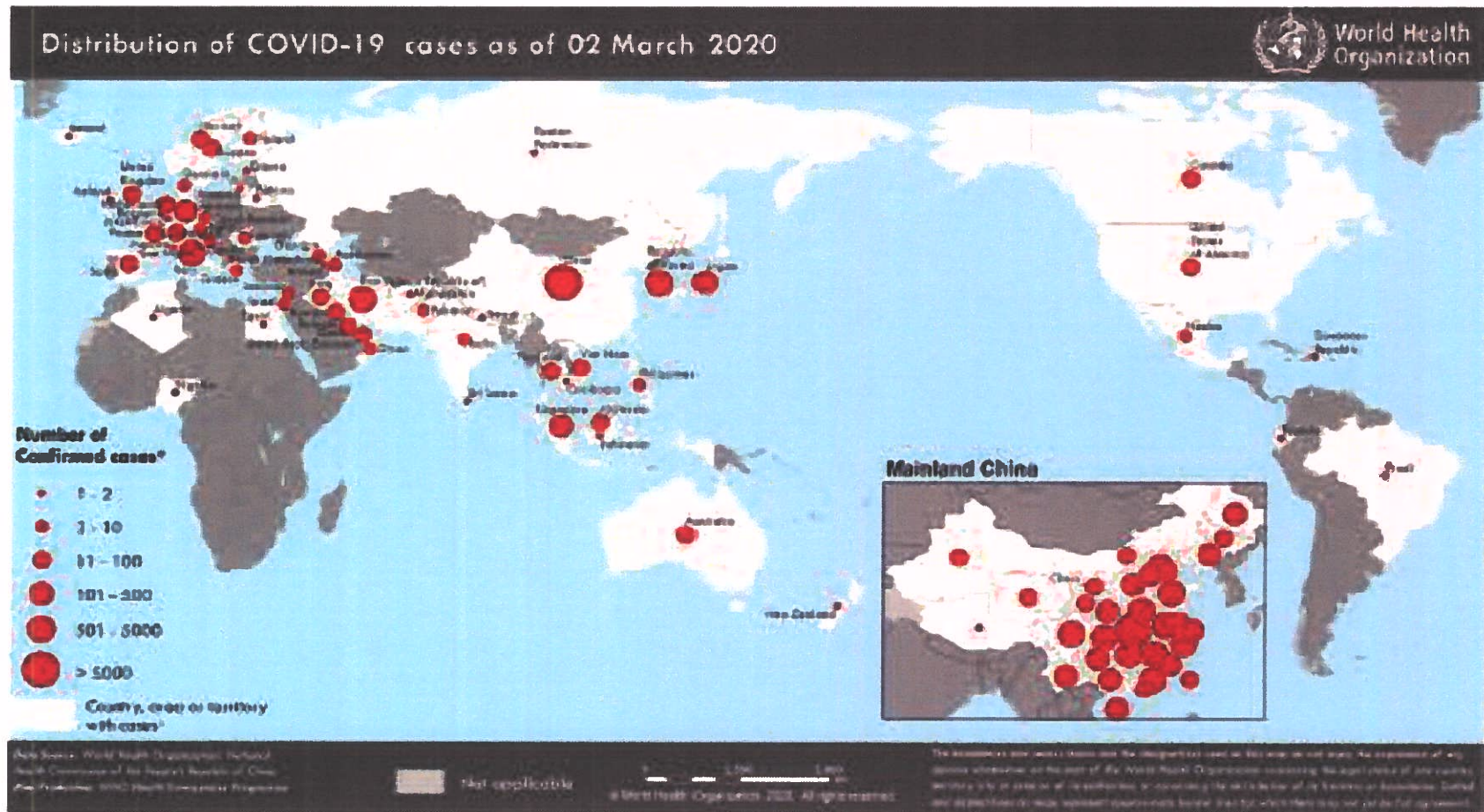
March

- Over 100 cases of COVID-19 identified in U.S
- 3rd and 4th case of COVID-19 identified in U.S.
- outbreak of COVID-19 in long-term care facility, Seattle, WA



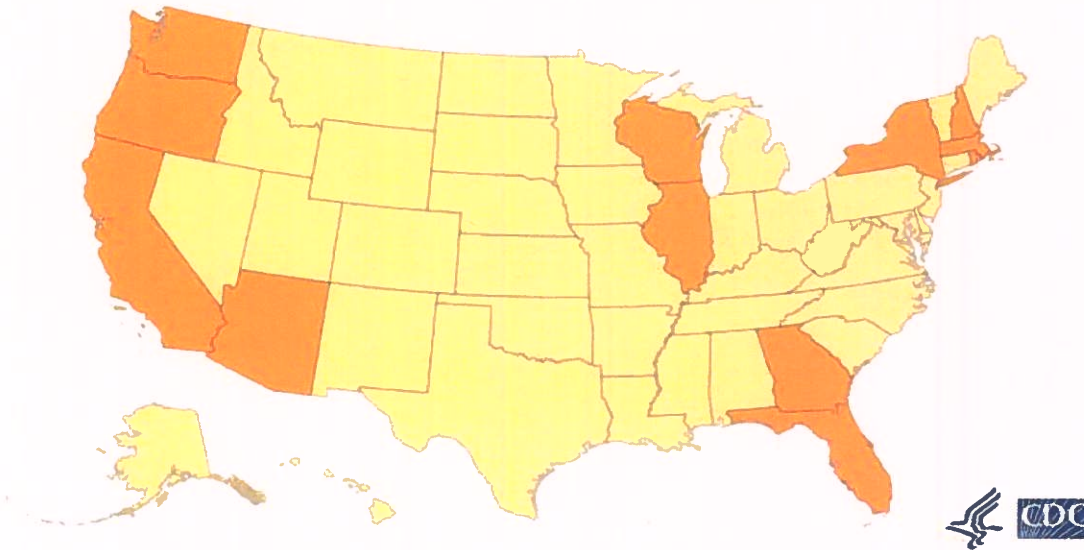
24th: Spread of virus crosses inflection point

Global Distribution of COVID-19 Cases



States with Confirmed Cases of COVID-19

States Reporting Cases of COVID-19 to CDC*

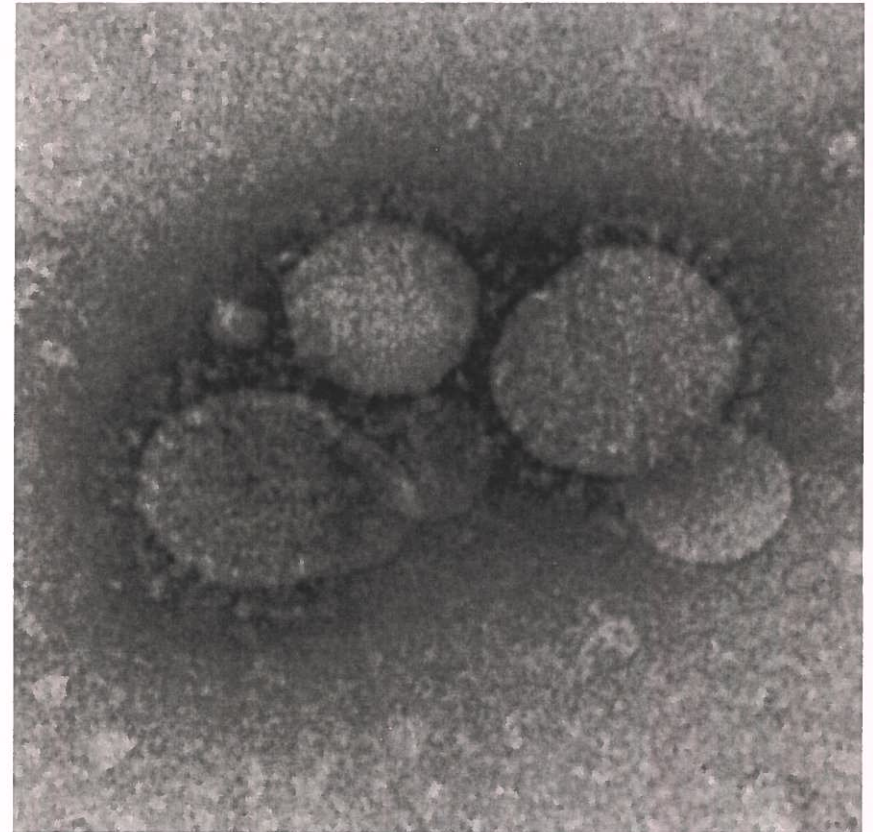


As of March 3, 2020, 60 confirmed cases reported in the United States and 6 deaths from 12 states.

These data represent cases detected and tested in the United States through U.S. public health surveillance systems since January 21, 2020.

Coronaviruses

- Virus that comes from a large family of viruses
- Circulates among animals, but can evolve and infect humans (e.g., MERS, SARS, etc.)
- Spreads to an uninfected person when an infected person coughs, sneezes, or talks (within 6 feet); evidence of animal-human transmission initially
- Causes respiratory illness (fever, cough, shortness of breath)
- Can lead to complication of pneumonia of both lungs



Picture of MERS-CoV CDC:
<https://www.cdc.gov/coronavirus/mers/photos.html>

Federal Public Health Response

- Develop public health, healthcare provider, school, and community guidance
- Reduce number of travelers from countries with community spread
- Travelers from Hubei Province mandatory quarantine for 14-days
- Institute airport screenings
- Isolate, genetically sequence COVID-19 and develop diagnostic testing, reverse transcriptase PCR (rt-PCR)
- FDA approves Emergency Use Authorization for rt-PCR; test now accessible by states and other countries

IDPH Response

- Monitoring global situation
- State preparedness and response activities
- Clinical guidance
 - HAN's disseminated through SIREN
 - Assist with evaluation, reporting, testing, case investigation
 - Coordination of diagnostic testing
- LHD guidance
 - Portal resources
 - Case investigation resources
- Sharing information with state partners and health system partners
- Resources
 - Website guidance, resources, up-to-date information
 - Portal page
 - Hotline

Local Public Health Response

- Share information with infection control preventionists and providers for preparedness of hospitals and outpatient clinics
- Developed healthcare checklist describing process of managing a person with symptoms that recently traveled or was in contact with confirmed case
- Update schools regarding guidance for travelers returning from mainland China
- Respond to public, school, and private business inquiries
- Investigate possible Persons Under Investigation (PUIs)
- Developed a Lake County Health Department webpage to update community
- Worked with LCHD-FQHCs to ensure our ability to screen, test and manage PUIs

LCHD COVID-19 Update

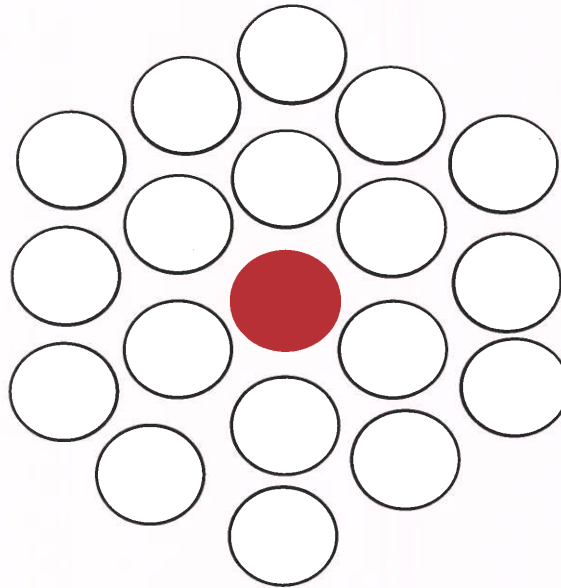
Return travelers from mainland China or contacts to confirmed case:

- Categorized as medium risk to public health:
 - Self-monitor symptoms with Health Department supervision for 14 days
 - Avoid school/work and other congregate settings and practice social distancing for 14 days
- Categorized as low risk to public health:
 - Self-monitor for symptoms
 - No restrictions on mobility

Contact Investigation

Communicable Diseases

- Transportation
- Gatherings
- Travel/Flights
- Home visitors



Hospital(s)

Clinic(s)

**No need for
masks or gloves!**

What Can the Community Do?

- Cover your cough or sneeze with a tissue, then throw the tissue in the trash. If no tissue is available, cough or sneeze into your upper sleeve or elbow, not your hands.
- Wash your hands often with soap and water for at least 20 seconds. If soap and water are not available, use an alcohol-based hand sanitizer with at least 60% alcohol.
- Avoid contact with people who are sick.
- If you are sick, stay home for at least 24 hours after your fever is gone.
- Clean and disinfect surfaces and objects that are frequently touched.
- Get your flu vaccine!



Emergency Response

Patti Corn
Emergency Response Coordinator

Review Your Continuity of Operations Plan

- Review the identified critical functions
- Ask the following questions:
 - Can your essential personnel work from home?
 - Are employees eligible for pay if under quarantine/isolation?
 - Is staff cross-trained in case of high absenteeism?
- Communications with the community

Emergency Operations Plan

Review:

- Mass Care Annex
- Health and Medical Annex
- Mortuary Service Annex

For questions regarding EOP Plan or review contact:

Rebecca Kumar
RKumar@lakecountyil.gov

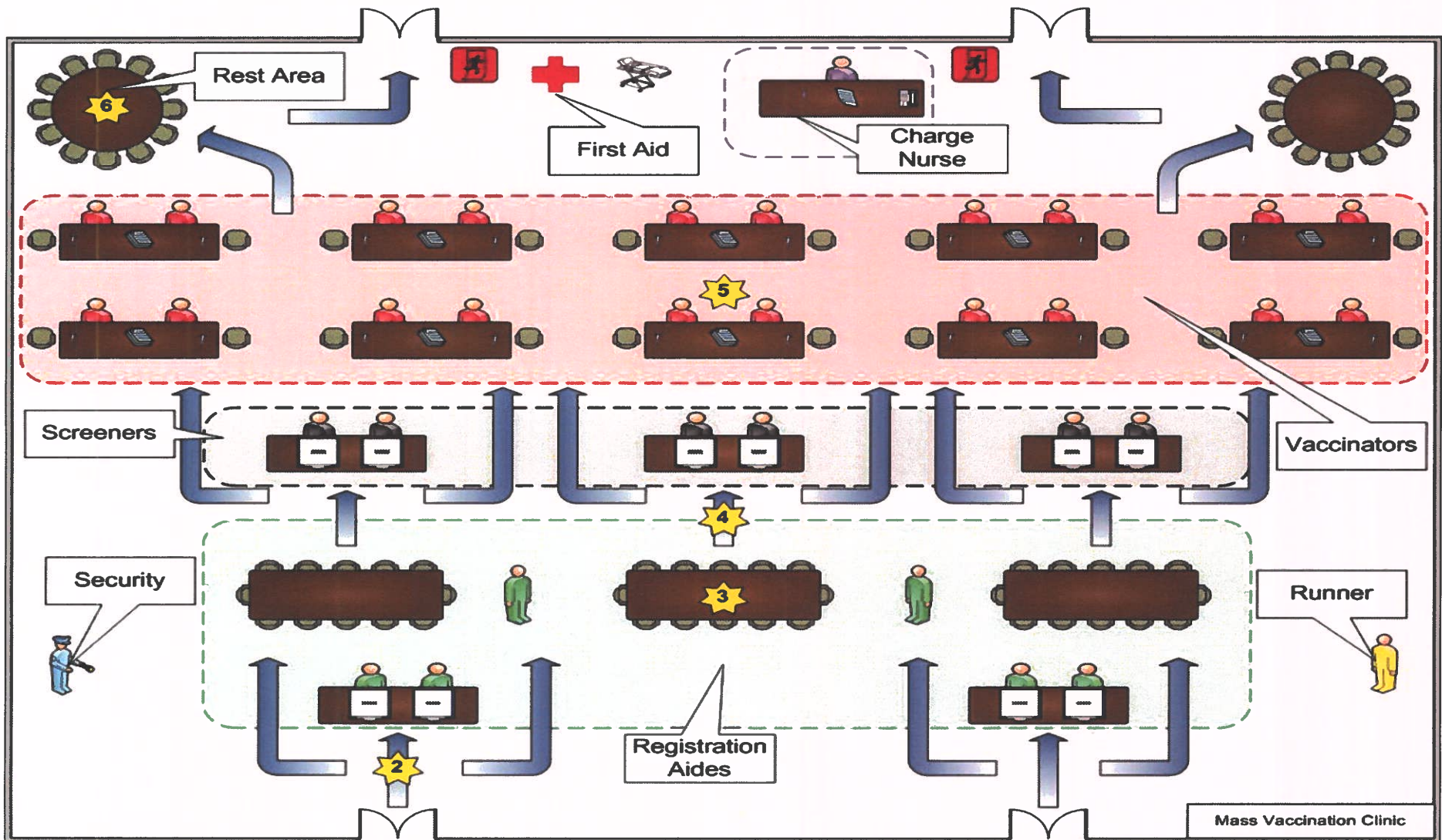
Point of Dispensing (POD)

- LCHD has plans for using pre-determined sites for POD's
- MOU's with 18 High Schools
- MOU's with 11 Municipalities and Park Districts
- Currently working with the second group to identify potential sites that can be used during school hours or better fit for serving the population

POD Requirements

- Large parking lot
- Separate entrance and exit
- Handicap accessible
- Adequate number of restrooms with hot and cold running water
- Adequate lighting
- Secure storage
- Staff break area
- Large area for multiple stations

Mass Vaccination Sites



First Responders

- MOUs for pre-positioned medication only
- Vaccination would be through LCHD or Regional Healthcare Coalition Hospital.
 - Time, place, and type of vaccine is determined by IDPH
 - During H1N1, first responders were vaccinated at local hospitals in the first tier

Event Planning

- No current guidance regarding the cancellation or postponement of large-scale events
- Encourage the discussion:
 - Is there ample space for social distancing?
 - Hand washing stations available?
 - Are attendees local or travelling to the venue?
- Review cleaning and sanitizing procedures and provide education to staff and clients

Preparing at Home

- Store a two-week supply of water and food.
- Periodically check your regular prescription drugs to ensure a continuous supply in your home.
- Have any nonprescription drugs and other health supplies on hand, including pain relievers, stomach remedies, cough and cold medicines, fluids with electrolytes, and vitamins.
- Get copies and maintain electronic versions of health records from doctors, hospitals, pharmacies and other sources and store them, for personal reference.
- Talk with family members and loved ones about how they would be cared for if they got sick, or what will be needed to care for them in your home.



Communications

Brian Louie
Senior Marketing and Communications Specialist

COVID-19 Communications

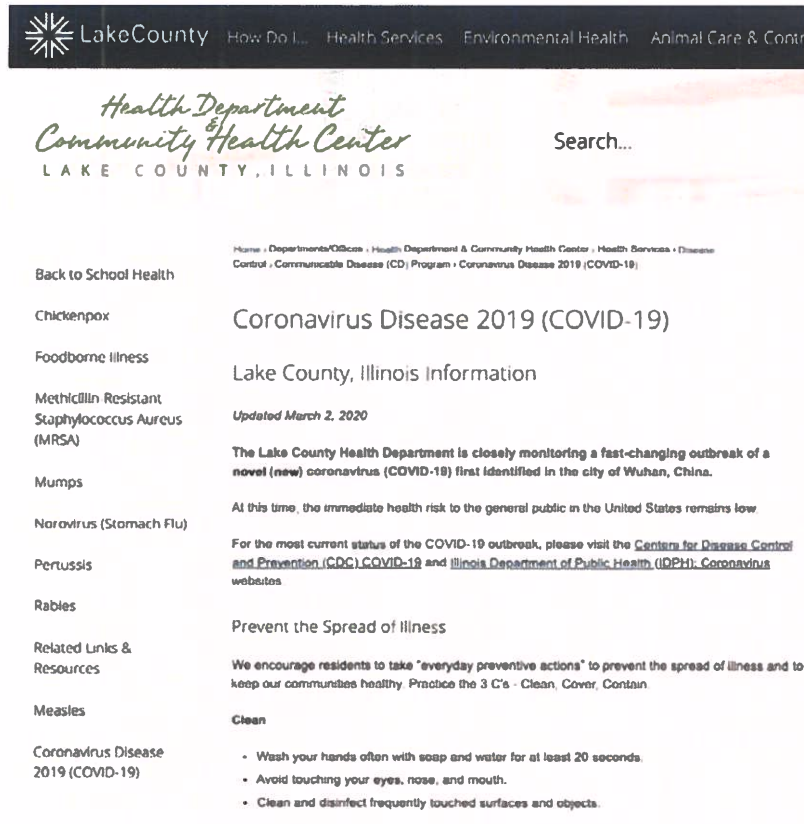
- Our goal: **accurate** and **timely** communication
- We are in daily contact with the **Centers for Disease Control and Prevention (CDC)** and **Illinois Department of Public Health (IDPH)**.
- Your role: **amplify** the message

Where can I find updates?

- **Lake County Health Department website**
 - lakecountyil.gov/coronavirus
- **IDPH, CDC, and WHO websites**
 - Illinois Department of Public Health (IDPH)
 - dph.illinois.gov/topics-services/diseases-and-conditions/diseases-a-z-list/coronavirus
 - Centers for Disease Control and Prevention (CDC)
 - cdc.gov/covid19
 - World Health Organization (WHO)
 - who.int/emergencies/diseases/novel-coronavirus-2019

Coronavirus Disease 2019 (COVID-19) Webpage

lakecountyil.gov/coronavirus



The screenshot shows the Lake County Health Department website. The header includes the Lake County logo and navigation links: Home, How Do I..., Health Services, Environmental Health, and Animal Care & Control. The main content area is titled "Coronavirus Disease 2019 (COVID-19)" and includes a search bar. The page content is organized into sections: "Lake County, Illinois Information" (updated March 2, 2020), "Prevent the Spread of Illness" (encouraging residents to take everyday preventive actions), and "Clean" (listing three actions: wash hands, avoid touching face, and clean/disinfect surfaces).

Home » Departments/Offices » Health Department & Community Health Center » Health Services » Disease Control » Communicable Disease (CD) Program » Coronavirus Disease 2019 (COVID-19)

Back to School Health

Chickenpox

Foodborne Illness

Methicillin Resistant Staphylococcus Aureus (MRSA)

Mumps

Norovirus (Stomach Flu)

Pertussis

Rabies

Related Links & Resources

Measles

Coronavirus Disease 2019 (COVID-19)

Coronavirus Disease 2019 (COVID-19)

Updated March 2, 2020

The Lake County Health Department is closely monitoring a fast-changing outbreak of a novel (new) coronavirus (COVID-19) first identified in the city of Wuhan, China.

At this time, the immediate health risk to the general public in the United States remains low.

For the most current status of the COVID-19 outbreak, please visit the [Centers for Disease Control and Prevention \(CDC\) COVID-19](#) and [Illinois Department of Public Health \(IDPH\) Coronavirus](#) websites.

Prevent the Spread of Illness

We encourage residents to take "everyday preventive actions" to prevent the spread of illness and to keep our communities healthy. Practice the 3 C's - Clean, Cover, Contain.

Clean

- Wash your hands often with soap and water for at least 20 seconds.
- Avoid touching your eyes, nose, and mouth.
- Clean and disinfect frequently touched surfaces and objects.

The webpage includes:

- Lake County updates
- General COVID-19 information from the IDPH and CDC
- Resources for specific groups
- CDC Frequently Asked Questions
- Contact information

Where can I find updates?

- **Coronavirus (COVID-19) Update Weekly Newsletter**

- Key audiences added to the list
- Encourage others to subscribe: <http://bit.ly/lccovid-19>

- **Social Media**



[facebook.com/healthdepartment](https://www.facebook.com/healthdepartment)



twitter.com/lakecohealth



[linkedin.com/company/healthdepartment](https://www.linkedin.com/company/healthdepartment)



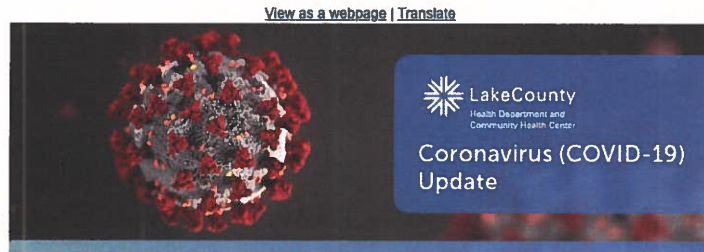
[NextDoor](https://www.nextdoor.com)



LakeCounty

Health Department and
Community Health Center

Coronavirus (COVID-19) Update Newsletter



March 9, 2020

This message includes weekly updates on the [COVID-19](#) response from the Lake County Health Department and Community Health Center. For the most current status of the COVID-19 outbreak, please visit the [Centers for Disease Control and Prevention \(CDC\) COVID-19](#) and [Illinois Department of Public Health \(IDPH\) Coronavirus](#) websites.

Lake County Update

Lorem ipsum dolor sit amet, consectetur adipiscing elit. Cras euismod dapibus augue at vehicula. Mauris sed consectetur ex, eget venenatis lectus. Sed id pellentesque mauris, et accumsan lectus. Mauris ex neque, venenatis sit amet placerat ultrices, congue nec arcu. Aenean sit amet euismod dui. Pellentesque ac elit consectetur est ullamcorper hendrerit quis eu arcu. Maecenas malesuada suscipit maximus. Cras est nulla, mattis et orci eget, molestie volutpat enim. Curabitur vulputate nunc ut rhoncus tempor. Click to edit this placeholder text.

Weekly email about COVID-19.

Emails will include:

- Lake County updates
- What you need to do
- Resources
- Useful links

Sign up: <http://bit.ly/lccovid-19>

Where can the public find answers?

Illinois COVID-19 Hotline

The IDPH has established a COVID-19 hotline and email address to answer questions from the public:

- Hotline: 1-800-889-3931
- Email: DPH.SICK@ILLINOIS.GOV

For additional information from the IDPH, visit: <http://www.dph.illinois.gov/topics-services/diseases-and-conditions/diseases-a-z-list/coronavirus>

Key Messages

- For the general American public, the immediate health risk from COVID-19 remains **low**.
- **We all have a role to play in keeping ourselves, our families, and communities safe. Remember to Follow the 3 C's:**



CLEAN hands often with soap and warm water for at least 20 seconds, disinfect frequently touched objects and surfaces, and avoid touching your eyes, nose, and mouth;



COVER your cough and sneeze with a tissue, then throw the tissue in the trash; and



CONTAIN germs by staying home if you are sick, except to receive medical care, and avoid close contact with people who are sick.

Key Messages - Flu



Flu activity continues to be high in the United States and in Illinois.

Residents are urged to get their annual flu vaccine if they have not yet done so.

The flu vaccine is the best way to protect yourself from the flu and reduces the chances of complications which could result in hospitalization.

Communications Contacts

Have questions or suggestions? Contact us.

Hannah Goering

Marketing and Communications Manager

(847) 377-8099

HGoering@lakecountyil.gov

Brian Louie

Senior Marketing and Communications Specialist

(847) 377-8356

BLouie@lakecountyil.gov



LakeCounty

Health Department and
Community Health Center



3010 Grand Avenue, Waukegan, Illinois 60085
(847) 377-8000
health.lakecountyil.gov



HealthDepartment



@LakeCoHealth



HealthDepartment