



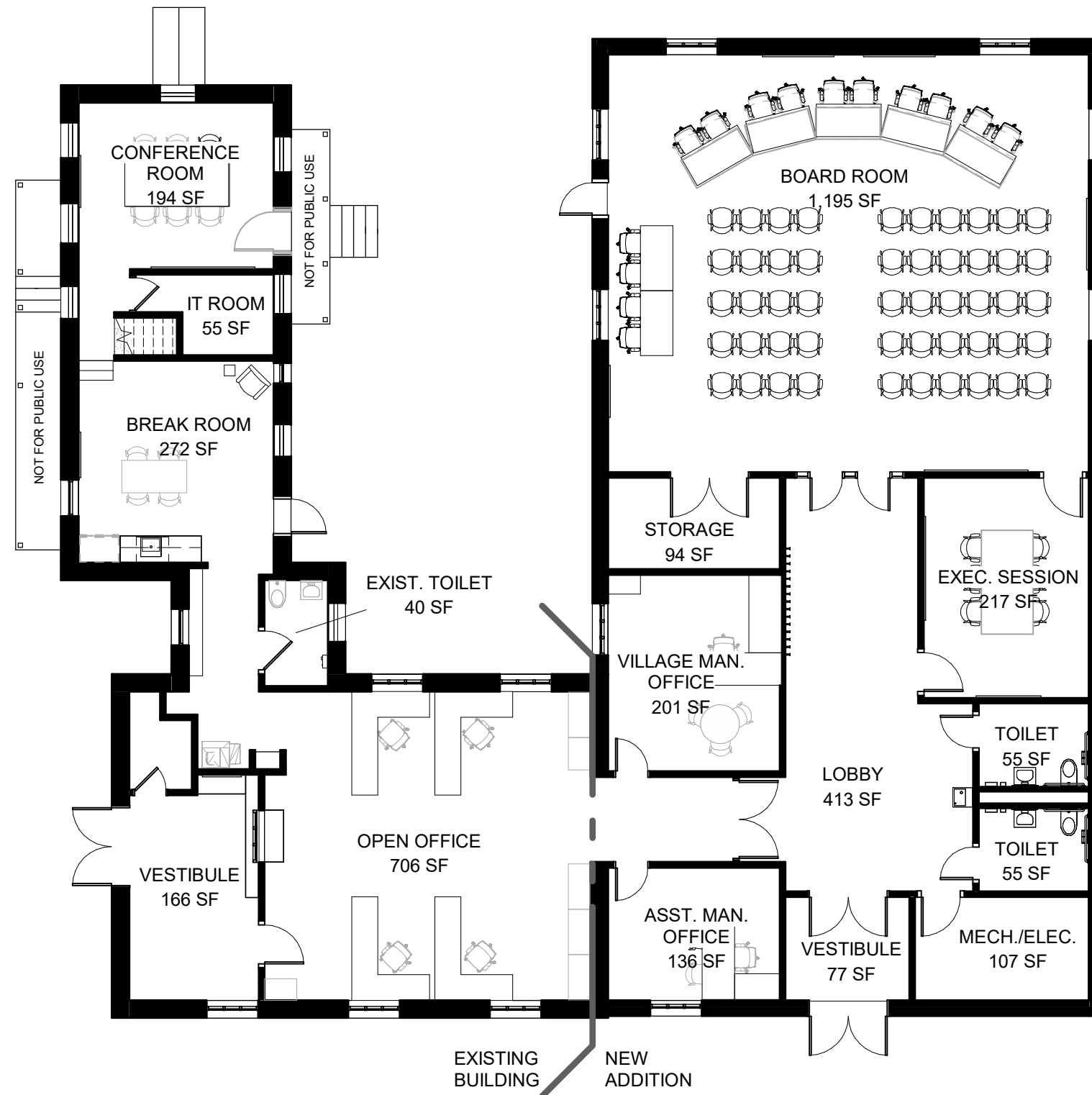
User Group Information

Long Grove Village Hall Addition and
Renovations

Village of Long Grove 223107

Long Grove, IL
September 22, 2023

UG 0	COVER SHEET
UG 1	OVERALL FLOOR PLAN
UG 2	FLOOR PLAN - AREA 'A'
UG 3	FLOOR PLAN - AREA 'B'
UG 4	FLOOR PLAN - AREA 'C'
UG 5	FLOOR PLAN - AREA 'D'

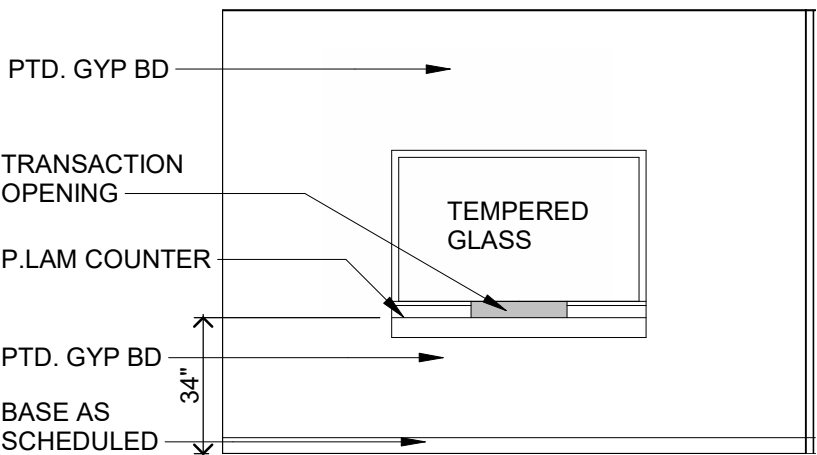
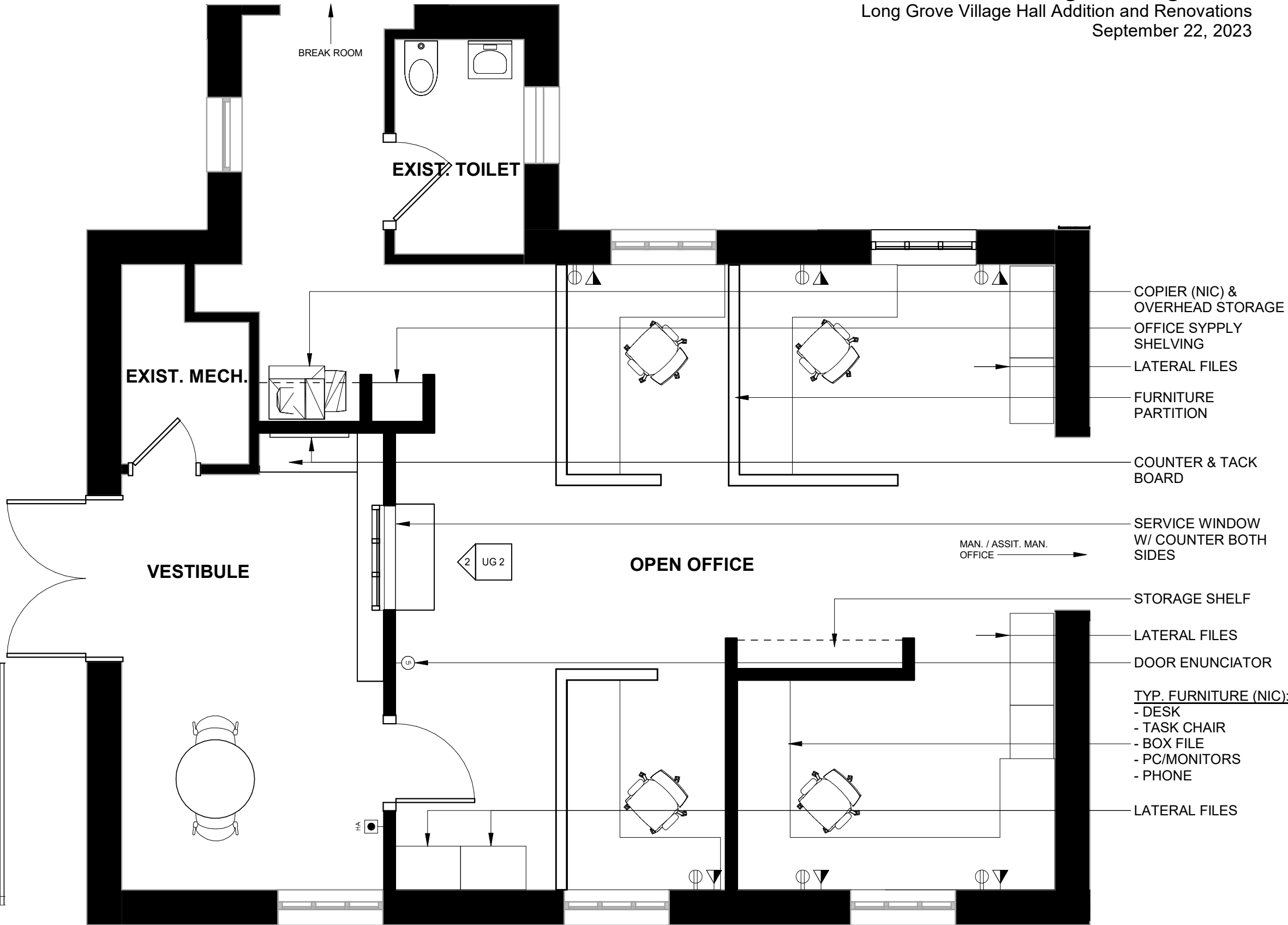


1 FLOOR PLAN - OVERALL
 3/32" = 1'-0"
 0 8' 16'



ELECTRICAL SYMBOL KEY

- DUPLEX RECEPTACLE (HIGH AND/OR LOW)
- DUPLEX RECEPTACLE
- DOUBLE DUPLEX RECEPTACLE
- FLOOR BOX
- SINGLE LIGHT SWITCH
- DOUBLE LIGHT SWITCH
- TRIPLE LIGHT SWITCH
- OCCUPANCY SENSING LIGHT SWITCH
- WALL OR CEILING PROJECTOR
- WALL OR CEILING SPEAKER
- TV OUTLET (HIGH AND/OR LOW)
- DATA OUTLET WITH DIRECT PHONE LINE OUTLET
- DATA OUTLET (# OF DROPS INDICATED)
- CLOCK
- HANDICAP ACTUATOR



2 TRANSACTION WINDOW
 1/4" = 1'-0"

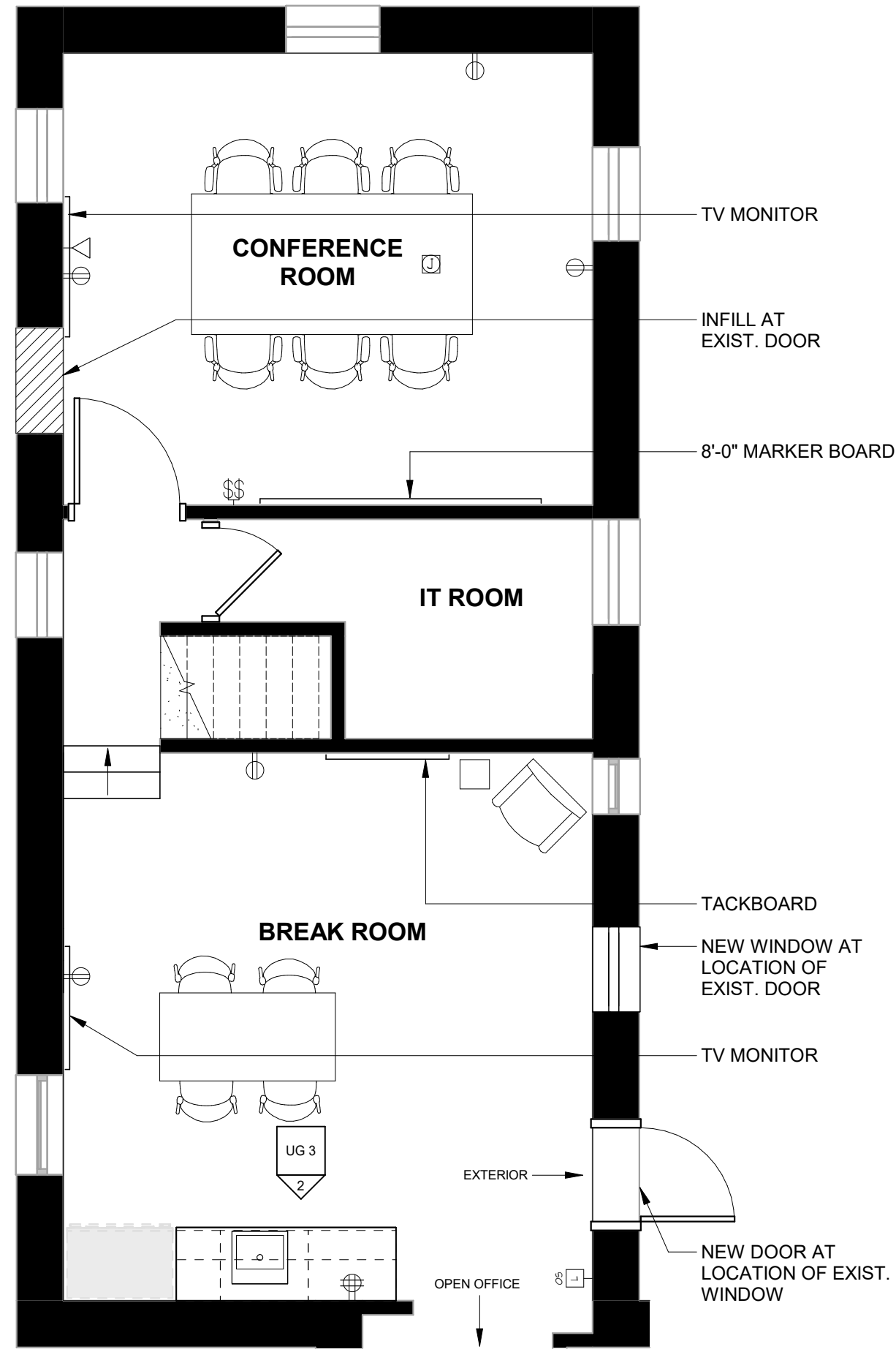
1 FLOOR PLAN - AREA 'A'
 1/4" = 1'-0"

9/20/2023 3:59:08 PM
 Autodesk Docs://223107 - Long Grove Village Hall Study/Long Grove Village Hall Study (2022).rvt
 Autodesk Docs://223107 - Long Grove Village Hall Study/Long Grove Village Hall Study (2022).rvt

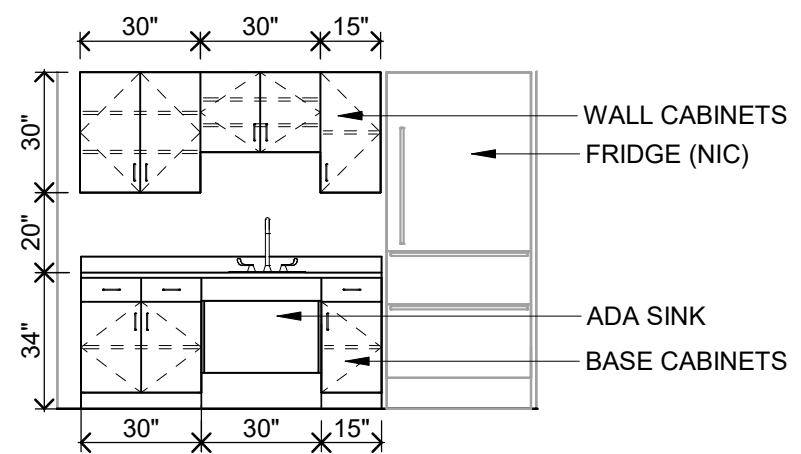


ELECTRICAL SYMBOL KEY

- DUPLEX RECEPTACLE (HIGH AND/OR LOW)
- DUPLEX RECEPTACLE
- DOUBLE DUPLEX RECEPTACLE
- FLOOR BOX
- SINGLE LIGHT SWITCH
- DOUBLE LIGHT SWITCH
- TRIPLE LIGHT SWITCH
- OCCUPANCY SENSING LIGHT SWITCH
- WALL OR CEILING PROJECTOR
- WALL OR CEILING SPEAKER
- TV OUTLET (HIGH AND/OR LOW)
- DATA OUTLET WITH DIRECT PHONE LINE OUTLET
- DATA OUTLET (# OF DROPS INDICATED)
- CLOCK
- HANDICAP ACTUATOR



1 FLOOR PLAN - AREA 'B'
 1/4" = 1'-0"
 0 3' 6'

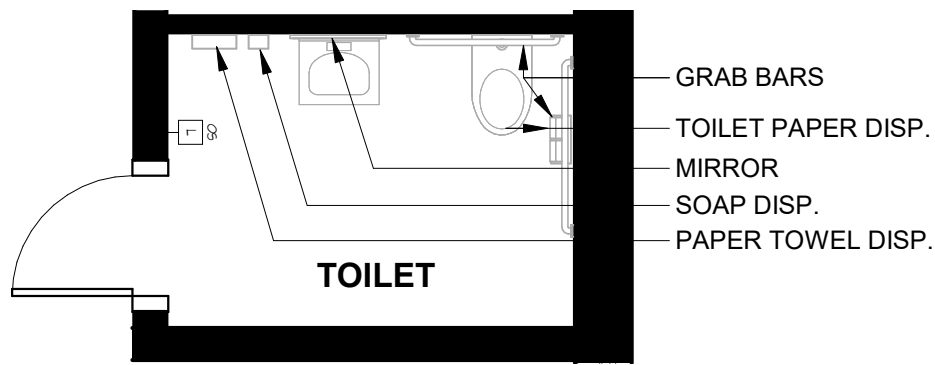


2 BREAK ROOM CASEWORK ELEVATION
 1/4" = 1'-0"
 0 3' 6'

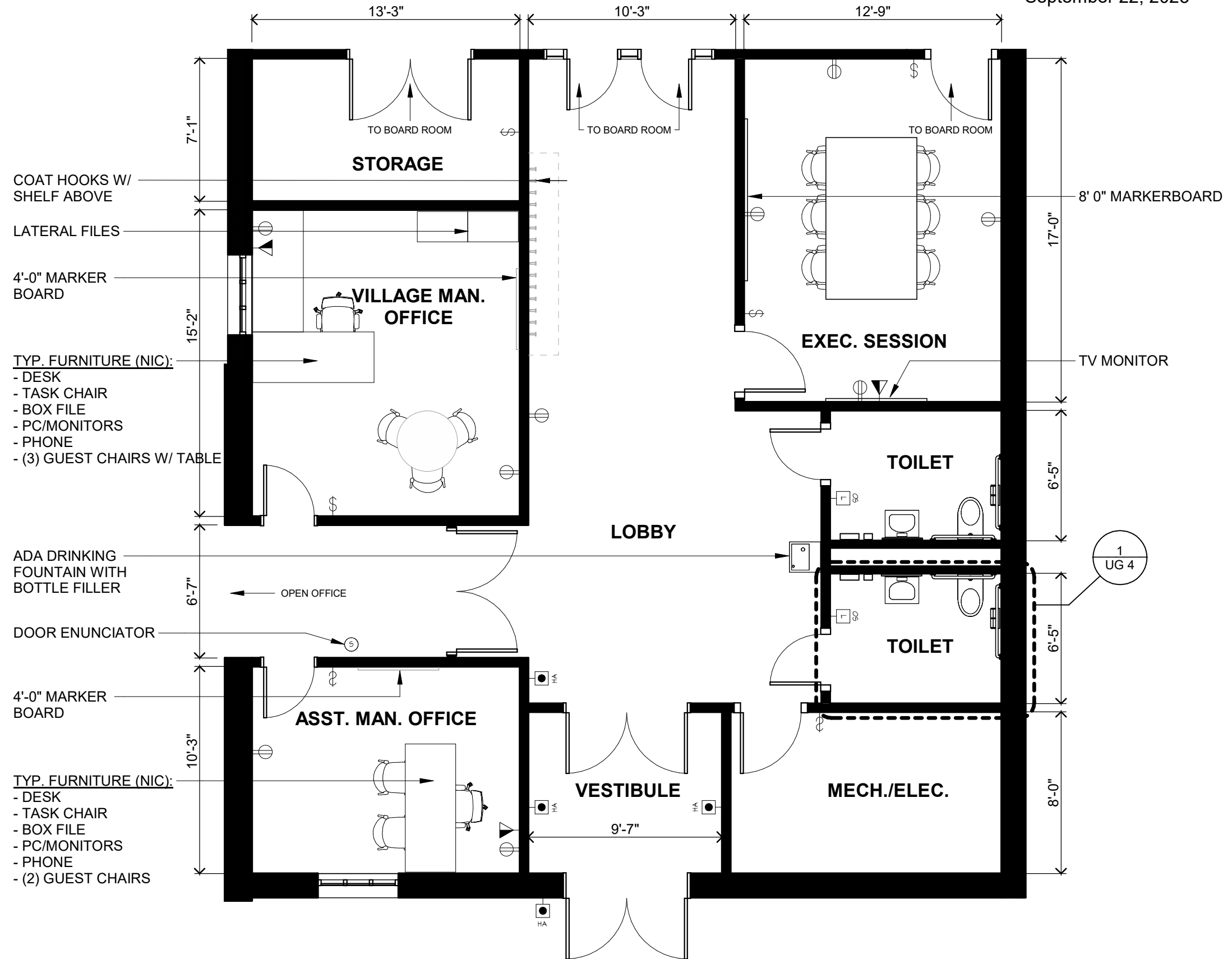


ELECTRICAL SYMBOL KEY

- DUPLEX RECEPTACLE (HIGH AND/OR LOW)
- DUPLEX RECEPTACLE
- DOUBLE DUPLEX RECEPTACLE
- FLOOR BOX
- SINGLE LIGHT SWITCH
- DOUBLE LIGHT SWITCH
- TRIPLE LIGHT SWITCH
- OCCUPANCY SENSING LIGHT SWITCH
- WALL OR CEILING PROJECTOR
- WALL OR CEILING SPEAKER
- TV OUTLET (HIGH AND/OR LOW)
- DATA OUTLET WITH DIRECT PHONE LINE OUTLET
- DATA OUTLET (# OF DROPS INDICATED)
- CLOCK
- HANDICAP ACTUATOR



1 TYPICAL TOILET
1/4" = 1'-0"
0 3' 6'



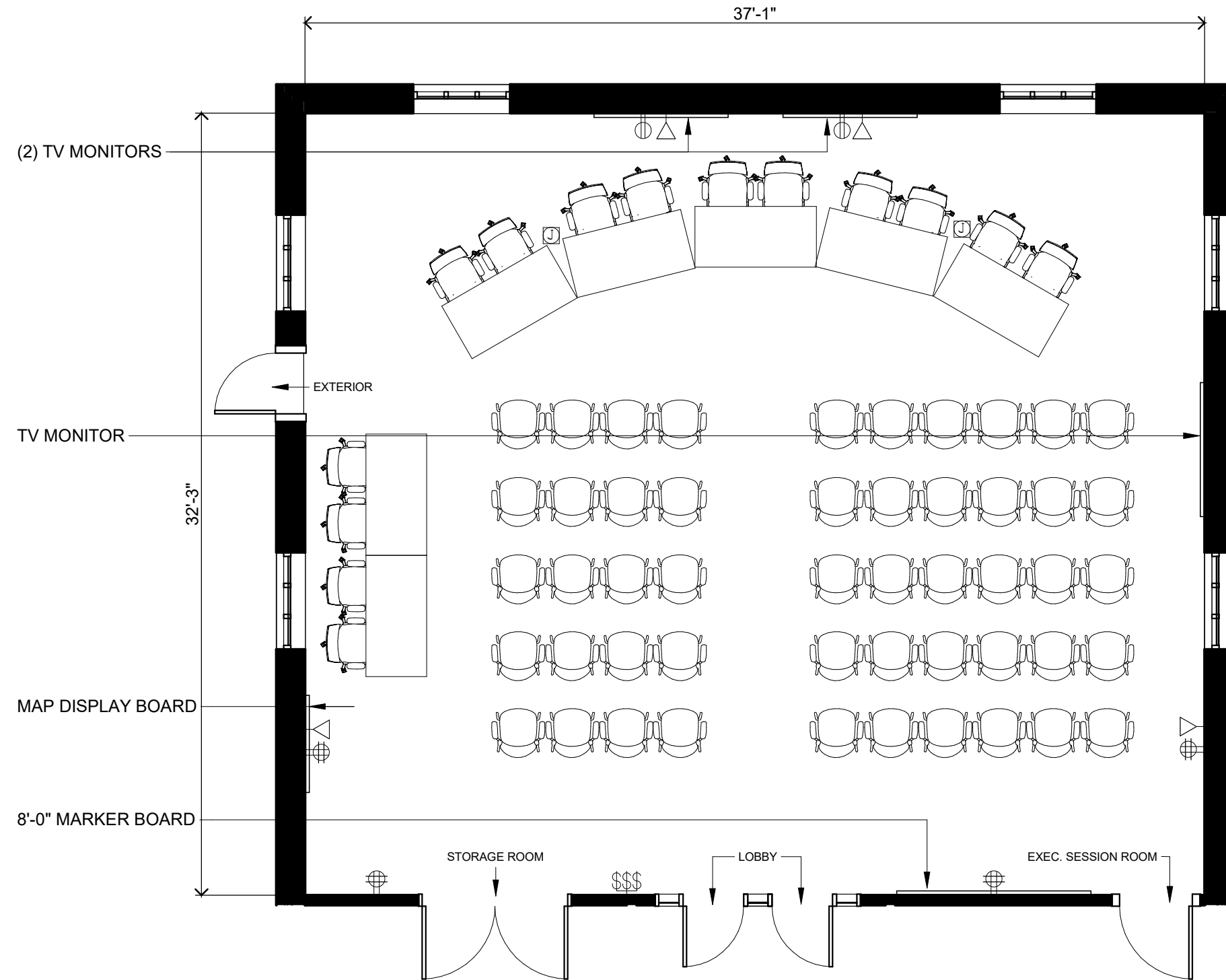
2 FLOOR PLAN - AREA 'C'
3/16" = 1'-0"
0 4' 8'

UG 4



ELECTRICAL SYMBOL KEY

- DUPLEX RECEPTACLE (HIGH AND/OR LOW)
- DUPLEX RECEPTACLE
- DOUBLE DUPLEX RECEPTACLE
- FLOOR BOX
- SINGLE LIGHT SWITCH
- DOUBLE LIGHT SWITCH
- TRIPLE LIGHT SWITCH
- OCCUPANCY SENSING LIGHT SWITCH
- WALL OR CEILING PROJECTOR
- WALL OR CEILING SPEAKER
- TV OUTLET (HIGH AND/OR LOW)
- DATA OUTLET WITH DIRECT PHONE LINE OUTLET
- DATA OUTLET (# OF DROPS INDICATED)
- CLOCK
- HANDICAP ACTUATOR



1 FLOOR PLAN - AREA 'D'
 3/16" = 1'-0"
 0 4' 8'